

Recombinant Mouse BTLA protein, His-tagged

Cat. No. BTLA-8699M **Lot. No.** (See product label)

SPECIFICATION

Product Overview	Recombinant Mouse BTLA protein (Glu30-Gly176), fused to His tag at C-terminus, was expressed in human 293 cells (HEK293).
Species	Mouse
Source	HEK293
ProteinLength	147
Description	B- and T-lymphocyte attenuator (BTLA) is also known as B- and T-lymphocyte-associated protein, CD antigen CD272. BTLA contains one Ig-like V-type (immunoglobulin-like) domain. As a lymphocyte inhibitory receptor, BTLA/CD272 inhibits lymphocytes during immune response. BTLA/CD272 can interact with tyrosine phosphatases PTPN6/SHP-1 and PTPN11/SHP-2, and interact with TNFRSF14/HVEM.
Form	Lyophilized from 0.22 um filtered solution in PBS, pH7.4, 10% trehalose.
Molecular Mass	The protein has a calculated MW of 18.6 kDa. The protein migrates as 30-45 kDa under reducing (R) condition (SDS-PAGE) due to glycosylation.
Endotoxin	Less than 1.0 EU per ug by the LAL method.
Purity	>95% as determined by SDS-PAGE.

 Tel: 1-631-559-9269 1-516-512-3133

 Email: info@creative-biomart.com  Fax: 1-631-938-8127

 45-1 Ramsey Road, Shirley, NY 11967, USA

Storage

For long term storage, the product should be stored at lyophilized state at -20 centigrade or lower.

Please avoid repeated freeze-thaw cycles.

This product is stable after storage at:

- 20 centigrade to -70 centigrade for 12 months in lyophilized state;
- 70 centigrade for 3 months under sterile conditions after reconstitution.

Reconstitution

It is recommended that sterile water be added to the vial to prepare a stock solution of 0.2 ug/ul. Centrifuge the vial at 4°C before opening to recover the entire contents.

GENE INFORMATION

Gene Name [BTLA](#)

Official Symbol [BTLA](#)

Synonyms BTLA; B and T lymphocyte associated; B- and T-lymphocyte attenuator; B and T lymphocyte attenuator; B- and T-lymphocyte-associated protein; A630002H24; MGC124217; MGC124218

Gene ID [208154](#)

mRNA Refseq [NM_001037719](#)

Protein Refseq [NP_001032808](#)

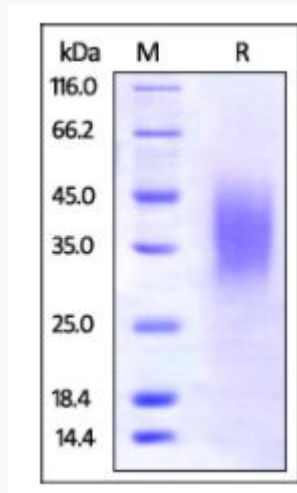
UniProt ID [Q32MV9](#)

 Tel: 1-631-559-9269 1-516-512-3133

 Email: info@creative-biomart.com  Fax: 1-631-938-8127

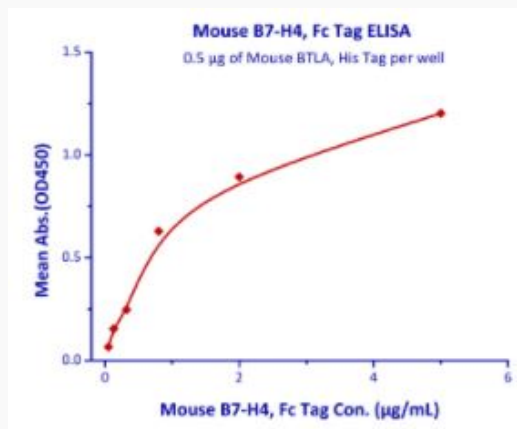
 45-1 Ramsey Road, Shirley, NY 11967, USA

SDS-PAGE of BTLA-8699M



Mouse BTLA, His Tag on SDS-PAGE under reducing (R) condition. The gel was stained overnight with Coomassie Blue. The purity of the protein is greater than 95%.

Bioactivity-ELISA of BTLA-8699M



Immobilized Mouse BTLA, His Tag at 5 µg/mL (100 µL/well) can bind Mouse B7-H4, Fc Tag with a linear range of 0.05-0.8 µg/mL (QC tested).

Tel: 1-631-559-9269 1-516-512-3133

Email: info@creative-biomart.com Fax: 1-631-938-8127

45-1 Ramsey Road, Shirley, NY 11967, USA