

## Recombinant Human BTN1A1 Protein (Ala27-Arg242), C-His tagged

Cat. No. BTN1A1-0800H Lot. No. (See product label)

### SPECIFICATION

<b>Product Overview</b>	Recombinant human BTN1A1 (Ala27-Arg242) fused with the C-terminal His tag was expressed in Mammalian cells.
<b>Species</b>	Human
<b>Source</b>	Mammalian Cells
<b>ProteinLength</b>	Ala27-Arg242
<b>Form</b>	Lyophilized powder/frozen liquid
<b>Molecular Mass</b>	23.76 kDa
<b>Purity</b>	>90% as determined by SDS-PAGE.
<b>Notes</b>	For research use only.
<b>Storage</b>	Use a manual defrost freezer and avoid repeated freeze thaw cycles. Store at 2 to 8 centigrade for one week. Store at -20 to -80 centigrade for twelve months from the date of receipt.
<b>Storage Buffer</b>	Supplied as solution form in PBS or lyophilized from PBS.
<b>Reconstitution</b>	Reconstitute in sterile water for a stock solution.

 Tel: 1-631-559-9269 1-516-512-3133

 Email: [info@creative-biomart.com](mailto:info@creative-biomart.com)  Fax: 1-631-938-8127

 45-1 Ramsey Road, Shirley, NY 11967, USA

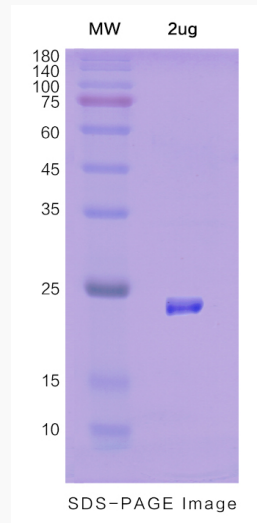
**Shipping**

They are shipped out with dry ice/blue ice unless customers require otherwise.

**GENE INFORMATION****Gene Name** [BTN1A1 butyrophilin, subfamily 1, member A1 \[ Homo sapiens \(human\) \]](#)**Official Symbol** [BTN1A1](#)**Synonyms** [BTN1A1](#); butyrophilin, subfamily 1, member A1; [BTN](#); butyrophilin subfamily 1 member A1; [BT](#); [bK14H9.2 \(butyrophilin, subfamily 1, member A1\)](#);**Gene ID** [696](#)**mRNA Refseq** [NM\\_001732](#)**Protein Refseq** [NP\\_001723](#)**MIM** [601610](#)**UniProt ID** [Q13410](#) Tel: 1-631-559-9269 1-516-512-3133 Email: [info@creative-biomart.com](mailto:info@creative-biomart.com)  Fax: 1-631-938-8127 45-1 Ramsey Road, Shirley, NY 11967, USA



**SDS-PAGE**



Tel: 1-631-559-9269 1-516-512-3133

Email: [info@creative-biomart.com](mailto:info@creative-biomart.com) Fax: 1-631-938-8127

45-1 Ramsey Road, Shirley, NY 11967, USA