

# Recombinant Active Human BTN1A1 Protein (ECD), Fc-His-tagged(C-ter)

Cat. No. BTN1A1-21H Lot. No. (See product label)

## SPECIFICATION

<b>Product Overview</b>	Recombinant Active Human BTN1A1 Protein (ECD) with Fc-His tag (C-ter) was expressed in HEK293.
<b>Species</b>	Human
<b>Source</b>	HEK293
<b>ProteinLength</b>	Ala27-Arg242
<b>Description</b>	Butyrophilin is the major protein associated with fat droplets in the milk. It is a member of the immunoglobulin superfamily. It may have a cell surface receptor function. The human butyrophilin gene is localized in the major histocompatibility complex (MHC) class I region of 6p and may have arisen relatively recently in evolution by the shuffling of exons between 2 ancestral gene families [provided by RefSeq, Jul 2008]
<b>Form</b>	Powder
<b>Bio-activity</b>	Measured by its ability to inhibit Anti-CD3-induced proliferation of Jurkat Human acute T lymphocyte leukemia cells. The ED50 for this effect is 0.13-0.52 ng/mL.
<b>Endotoxin</b>	Endotoxin level is less than 1.0 EU/μg of the protein, as determined by the LAL test.
<b>Purity</b>	> 97% (by SDS-PAGE)

 Tel: 1-631-559-9269 1-516-512-3133

 Email: [info@creative-biomart.com](mailto:info@creative-biomart.com)  Fax: 1-631-938-8127

 45-1 Ramsey Road, Shirley, NY 11967, USA

<b>Applications</b>	FuncSt, SDS-PAGE
<b>Notes</b>	For laboratory research only, not for drug, diagnostic or other use.
<b>Storage</b>	Lyophilized protein should be stored at -20°C or -80°C. After reconstitution, aliquot and store at -20°C for up to one month, at 2-8°C for up to one week. Storage in frost free freezers is not recommended. Avoid repeated freeze/thaw cycles. Suggest spin the vial prior to opening.
<b>Storage Buffer</b>	PBS (pH 7.4)
<b>Reconstitution</b>	Reconstitute to a concentration of 0.1-0.5 mg/ml in sterile distilled water.
<b>GENE INFORMATION</b>	
<b>Gene Name</b>	<a href="#">BTN1A1 butyrophilin, subfamily 1, member A1 [ Homo sapiens ]</a>
<b>Official Symbol</b>	<a href="#">BTN1A1</a>
<b>Synonyms</b>	BTN1A1; butyrophilin, subfamily 1, member A1; BTN; butyrophilin subfamily 1 member A1; BT; bK14H9.2 (butyrophilin, subfamily 1, member A1);
<b>Gene ID</b>	<a href="#">696</a>
<b>mRNA Refseq</b>	<a href="#">NM_001732</a>
<b>Protein Refseq</b>	<a href="#">NP_001723</a>
<b>MIM</b>	<a href="#">601610</a>
<b>UniProt ID</b>	<a href="#">Q13410</a>

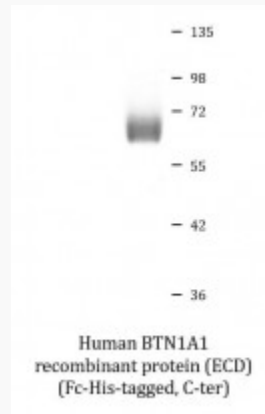
 Tel: 1-631-559-9269 1-516-512-3133

 Email: [info@creative-biomart.com](mailto:info@creative-biomart.com)  Fax: 1-631-938-8127

 45-1 Ramsey Road, Shirley, NY 11967, USA



**SDS-PAGE**



Tel: 1-631-559-9269 1-516-512-3133

Email: [info@creative-biomart.com](mailto:info@creative-biomart.com) Fax: 1-631-938-8127

45-1 Ramsey Road, Shirley, NY 11967, USA