

# Recombinant Human BTN1A1 Protein, Myc/DDK-tagged, C13 and N15-labeled

Cat. No. BTN1A1-2826H Lot. No. (See product label)

## SPECIFICATION

### Product Overview

BTN1A1 MS Standard C13 and N15-labeled recombinant protein (NP\_001723) with a C-terminal MYC/DDK tag, was expressed in HEK293 cells.

### Species

Human

### Source

HEK293

### Description

Butyrophilin is the major protein associated with fat droplets in the milk. It is a member of the immunoglobulin superfamily. It may have a cell surface receptor function. The human butyrophilin gene is localized in the major histocompatibility complex (MHC) class I region of 6p and may have arisen relatively recently in evolution by the shuffling of exons between 2 ancestral gene families

### Molecular Mass

58.8 kDa

### AA Sequence

MAVFPSSGLPRCLLTLLQLPKLDSAPFDVIGPPEPILAVVGEDAELPCRLSPNASAE  
HLELRWFRKKVSPAVLVHRDGREQAEQMPEYRGRATLVQDGIKGRVALRIRGVR  
VSDDGEYTCFFREDGSYEEALVHLKVAALGSDPHISMQVQENGEICLECTSVGWYP  
EPQVQWRTSKGEKFPSTSESRNPDEEGLFTVAASVIIRDSTSTKNVSCYIQNLLLGQE  
KKVEISIPASSLPRLTPWIVAVAVILMVLGLLTIGSIFFTWRLYNERPRERRNEFSSKER  
LLEELKWKKATLHAVDVTLPDPTAHPHLFLYEDSKSVRLEDSRQKLPEKTERFDSWP  
CVLGRETFTSGRHYWEVEVGDRTDWAIGVCRENVMMKKGFDPMTPENGFVAVELY  
NGYWALTPLRTPLPLAGPPRRVGFILDYESGDIFYNMNDGSDIYTFSSNVTFSGPL

 Tel: 1-631-559-9269 1-516-512-3133

 Email: [info@creative-biomart.com](mailto:info@creative-biomart.com)  Fax: 1-631-938-8127

 45-1 Ramsey Road, Shirley, NY 11967, USA

RPFFCLWSSGKKPLTICPIADGPERVTVIANAQDLSKEIPLSPMGEESAPRDADTLHS  
KLIPTQPSQGAPTRTRPQLEQKLISEEDLAANDILDYKDDDDKV

**Purity** > 80% as determined by SDS-PAGE and Coomassie blue staining

**Stability** Stable for 3 months from receipt of products under proper storage and handling conditions.

**Storage** Store at -80 centigrade. Avoid repeated freeze-thaw cycles.

**Concentration** 50 µg/mL as determined by BCA

**Storage Buffer** 100 mM glycine, 25 mM Tris-HCl, pH 7.3.

## GENE INFORMATION

**Gene Name** [BTN1A1 butyrophilin subfamily 1 member A1 \[ Homo sapiens \(human\) \]](#)

**Official Symbol** [BTN1A1](#)

**Synonyms** BTN1A1; butyrophilin, subfamily 1, member A1; BTN; butyrophilin subfamily 1 member A1; BT; bK14H9.2 (butyrophilin, subfamily 1, member A1);

**Gene ID** [696](#)

**mRNA Refseq** [NM\\_001732](#)

**Protein Refseq** [NP\\_001723](#)

**MIM** [601610](#)

 Tel: 1-631-559-9269 1-516-512-3133

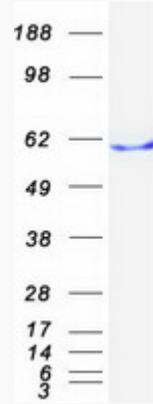
 Email: [info@creative-biomart.com](mailto:info@creative-biomart.com)  Fax: 1-631-938-8127

 45-1 Ramsey Road, Shirley, NY 11967, USA

UniProt ID

Q13410

SDS-PAGE



 Tel: 1-631-559-9269 1-516-512-3133

 Email: [info@creative-biomart.com](mailto:info@creative-biomart.com)  Fax: 1-631-938-8127

 45-1 Ramsey Road, Shirley, NY 11967, USA