

## Recombinant Human BTN2A1 protein, His-tagged

Cat. No. BTN2A1-1679H Lot. No. (See product label)

### SPECIFICATION

<b>Product Overview</b>	Recombinant Human BTN2A1 protein(Q7KYR7-1)(Gln29-Ala248), fused with C-terminal His tag, was expressed in HEK293.
<b>Species</b>	Human
<b>Source</b>	C-His
<b>ProteinLength</b>	Gln29-Ala248
<b>Tag</b>	C-His
<b>Form</b>	Supplied as 0.22µm filtered solution in PBS (pH 7.4).
<b>Bio-activity</b>	Human BTN2A1, His Tag immobilized on CM5 Chip can bind Human CD209, His Tag with an affinity constant of 0.12 µM as determined in SPR assay (Biacore T200).
<b>Molecular Mass</b>	The protein has a predicted MW of 25.65 kDa. Due to glycosylation, the protein migrates to 38-48 kDa based on Tris-Bis PAGE result.
<b>Endotoxin</b>	Less than 1EU per µg by the LAL method.
<b>Purity</b>	> 95% as determined by Tris-Bis PAGE; > 95% as determined by HPLC.
<b>Storage</b>	Valid for 12 months from date of receipt when stored at -80°C.;Recommend to aliquot the protein into smaller quantities for optimal storage. Please do not repeated freeze-

 Tel: 1-631-559-9269 1-516-512-3133

 Email: [info@creative-biomart.com](mailto:info@creative-biomart.com)  Fax: 1-631-938-8127

 45-1 Ramsey Road, Shirley, NY 11967, USA

thaw cycles.

**Reconstitution**

It is recommended that sterile water be added to the vial to prepare a stock solution of 0.2 ug/ul. Centrifuge the vial at 4°C before opening to recover the entire contents.

**GENE INFORMATION**

**Gene Name** [BTN2A1 butyrophilin, subfamily 2, member A1 \[ Homo sapiens \]](#)

**Official Symbol** [BTN2A1](#)

**Synonyms** [BTN2A1](#); butyrophilin, subfamily 2, member A1; butyrophilin subfamily 2 member A1; BT2.1; BTF1; butyrophilin BTF1; DJ3E1.1; BK14H9.1; FLJ36567;

**Gene ID** [11120](#)

**mRNA Refseq** [NM\\_001197233](#)

**Protein Refseq** [NP\\_001184162](#)

**MIM** [613590](#)

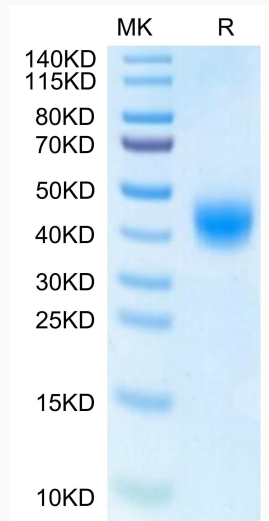
**UniProt ID** [Q7KYR7](#)

 Tel: 1-631-559-9269 1-516-512-3133

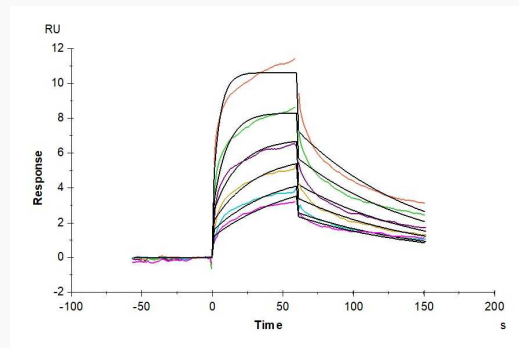
 Email: [info@creative-biomart.com](mailto:info@creative-biomart.com)  Fax: 1-631-938-8127

 45-1 Ramsey Road, Shirley, NY 11967, USA

**Tris-Bis PAGE**



**SPR**



 Tel: 1-631-559-9269 1-516-512-3133

 Email: [info@creative-biomart.com](mailto:info@creative-biomart.com)  Fax: 1-631-938-8127

 45-1 Ramsey Road, Shirley, NY 11967, USA