

Recombinant Human BTN2A1 Protein, GST-tagged

Cat. No. BTN2A1-393H Lot. No. (See product label)

SPECIFICATION

Product Overview	Human BTN2A1 full-length ORF (AAH16661, 1 a.a. - 334 a.a.) recombinant protein with GST-tag at N-terminal.
Species	Human
Source	Wheat Germ
Description	This gene is a member of the BTN2 subfamily of genes, which encode proteins belonging to the butyrophilin protein family. The gene is located in a cluster on chromosome 6, consisting of seven genes belonging to the expanding B7/butyrophilin-like group, a subset of the immunoglobulin gene superfamily. The encoded protein is an integral plasma membrane B box protein involved in lipid, fatty-acid and sterol metabolism.
Form	50 mM Tris-HCl, 10 mM reduced Glutathione, pH=8.0 in the elution buffer.
Molecular Mass	62.48 kDa
AA Sequence	MESAAALHFSRPASLLLLLLSLCALVSAQFIVVGPTDPILATVGENTTLRCHLSPEKNA EDMEVRWFRSQFSPA V FVYKGGREERTEEQMEEYRGR TTFVSKDISRGSVALVIHNI TAQENGTYRCYFQEGRSYDEAILHLV VAGLGSKPLISMRGHEDGGIRLECISRGWYP KPLTVWRDPYGGVAPALKEVSMPDADGLFMVTTAVIIRDKSVRNMSCSINNTLLGQK KESVIFIPESFMPSVSPCAVALPIIVVILMIPIAVCIYWINKLQKEKKILSGEKEFERETRE IALKELEKERVQKEEELQVKEKLQEELRWRRTFLHAELQFFSN

 Tel: 1-631-559-9269 1-516-512-3133

 Email: info@creative-biomart.com  Fax: 1-631-938-8127

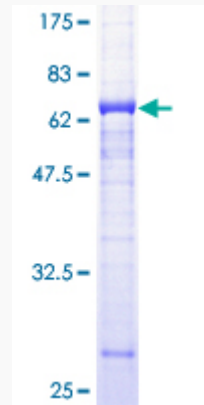
 45-1 Ramsey Road, Shirley, NY 11967, USA

Quality Control Test	12.5% SDS-PAGE Stained with Coomassie Blue.
Storage	Store at -80 centigrade. Aliquot to avoid repeated freezing and thawing.
Storage Buffer	50 mM Tris-HCl, 10 mM reduced Glutathione, pH=8.0 in the elution buffer.
GENE INFORMATION	
Gene Name	BTN2A1 butyrophilin, subfamily 2, member A1 [Homo sapiens]
Official Symbol	BTN2A1
Synonyms	BTN2A1; butyrophilin, subfamily 2, member A1; butyrophilin subfamily 2 member A1; BT2.1; BTF1; butyrophilin BTF1; DJ3E1.1; BK14H9.1; FLJ36567;
Gene ID	11120
mRNA Refseq	NM_001197233
Protein Refseq	NP_001184162
MIM	613590
UniProt ID	Q7KYR7

 Tel: 1-631-559-9269 1-516-512-3133

 Email: info@creative-biomart.com  Fax: 1-631-938-8127

 45-1 Ramsey Road, Shirley, NY 11967, USA



 Tel: 1-631-559-9269 1-516-512-3133

 Email: info@creative-biomart.com  Fax: 1-631-938-8127

 45-1 Ramsey Road, Shirley, NY 11967, USA