

Recombinant Human BTN2A2 Protein, Myc/DDK-tagged, C13 and N15-labeled

Cat. No. BTN2A2-2180H **Lot. No.** (See product label)

SPECIFICATION

Product Overview	BTN2A2 MS Standard C13 and N15-labeled recombinant protein (NP_008926) with a C-terminal MYC/DDK tag, was expressed in HEK293 cells.
Species	Human
Source	HEK293
Description	Butyrophilin is the major protein associated with fat droplets in the milk. This gene is a member of the BTN2 subfamily of genes, which encode proteins belonging to the butyrophilin protein family. The gene is located in a cluster on chromosome 6, consisting of seven genes belonging to the expanding B7/butyrophilin-like group, a subset of the immunoglobulin gene superfamily. The encoded protein is a type I receptor glycoprotein involved in lipid, fatty-acid and sterol metabolism. Several alternatively spliced transcript variants encoding different isoforms have been found for this gene.
Molecular Mass	59.1 kDa
AA Sequence	MEPAAALHFSLPASLLLLLLLLLLLLSLCALVSAQFTVVG PANPILAMVGENTTLRCHLSP EKNAEDMEVRWFRSQFSPAVFVYKGGREERTEEQMEEYRGRITFVSKDINRGSVALV IHNVTAQENGIYRCYFQEGRSYDEAILRLVVAGLGSKPLIEIKAQEDGSIWLECISGG WYPEPLTVWRDPYGEVVPALKEVSIADADGLFMVTTAVIIRDKYVRNVSCSVNNTLL GQEKETVIFIPESFMPSASPWMVALAVILTASPWMVSMTVILAVFIIFMAVSICCIKKLQ

 Tel: 1-631-559-9269 1-516-512-3133

 Email: info@creative-biomart.com  Fax: 1-631-938-8127

 45-1 Ramsey Road, Shirley, NY 11967, USA

REKKILSGEKKVEQEEKEIAQQLQEELRWRRTFLHAADVLDPDTAHPFLSEDRR
 SVRRGPYRQRVPDNPERFDSQPCVLGWESFASGKHYWEVEVENVMVWTVGVCR
 HSVERKGEVLLIPQNGFWTLEMFGNQYRALSSPERILPLKESLCRVGVFLDYEAGDV
 SFYNMRDRSHIYTCPRSAFTVPVRPFFRLGSDDSPIFICPALTGASGVMVPEEGLKL
 HRVGTHQSLTRTRPLEQKLISEEDLAANDILDYKDDDDKV

Purity > 80% as determined by SDS-PAGE and Coomassie blue staining

Stability Stable for 3 months from receipt of products under proper storage and handling conditions.

Storage Store at -80 centigrade. Avoid repeated freeze-thaw cycles.

Concentration 50 µg/mL as determined by BCA

Storage Buffer 100 mM glycine, 25 mM Tris-HCl, pH 7.3.

GENE INFORMATION

Gene Name [BTN2A2 butyrophilin subfamily 2 member A2 \[Homo sapiens \(human\) \]](#)

Official Symbol [BTN2A2](#)

Synonyms BT2A2_HUMAN; BTF2; BTN2A2; butyrophilin 2; Butyrophilin subfamily 2 member A2;

Gene ID [10385](#)

mRNA Refseq [NM_006995](#)

Protein Refseq [NP_008926](#)

 Tel: 1-631-559-9269 1-516-512-3133

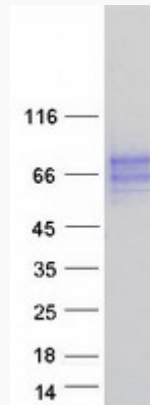
 Email: info@creative-biomart.com  Fax: 1-631-938-8127

 45-1 Ramsey Road, Shirley, NY 11967, USA

MIM 613591

UniProt ID Q8WVV5

SDS-PAGE



 Tel: 1-631-559-9269 1-516-512-3133

 Email: info@creative-biomart.com  Fax: 1-631-938-8127

 45-1 Ramsey Road, Shirley, NY 11967, USA