

Recombinant Human BTNL2 Protein, Fc-tagged

Cat. No. BTNL2-34H Lot. No. (See product label)

SPECIFICATION

Product Overview	Recombinant Human BTNL2 Protein, fused to Fc-tag, was expressed in CHO cells.
Species	Human
Source	CHO
Description	<p>This gene encodes a major histocompatibility complex, class II associated, type I transmembrane protein which belongs to the butyrophilin-like B7 family of immunoregulators. It is thought to be involved in immune surveillance, serving as a negative T-cell regulator by decreasing T-cell proliferation and cytokine release. The encoded protein contains an N-terminal signal peptide, two pairs of immunoglobulin-like domains, separated by a heptad peptide sequence, and a C-terminal transmembrane domain. Naturally occurring mutations in this gene are associated with sarcoidosis, rheumatoid arthritis, ulcerative colitis, inflammatory bowel disease, myositis, type 1 diabetes, systemic lupus erythematosus, acute coronary syndrome, and prostate cancer.</p>
Form	Lyophilized from 0.2µm-filtered solution in PBS, with 5% Mannitol, 5% trehalose.
Molecular Mass	75.2 kDa
AA Sequence	<p>KQSEDFRVIGPAHPILAGVGEDALLTCQLLPKRRTTMHVEVRWYRSEPSTPVFVHRD GVEVTEMQMEEYRGWVEVIENGIAGKGNVALKIHNIQPSDNGQYWCHFQDGNVYCGE TSLLLKVAGLGSAPSIHMEGPGESGVQLVCTARGWFPEPQVYWEDIRGEKLLAVSE HRIQDKDGLFYAEATLVVRNASAESVSLVHNPVLTEEKGSVISLPEKLQTELASLKV</p>

 Tel: 1-631-559-9269 1-516-512-3133

 Email: info@creative-biomart.com  Fax: 1-631-938-8127

 45-1 Ramsey Road, Shirley, NY 11967, USA

NGPSQPILVRVGEDIQLTTCYLSPKANAQSMEVRWDRSHRYPAVHVYMDGDHVAGE
 QMAEYRGRTVLVSDAIDEGRLTLQILSARPSDDGQYRCLFEKDDVYQEASLDLKVVS
 LGSSPLITVEGQEDGEMQPMCSSDGWFPQPHVPWRDMEGKTIPSSSQALTQGSH
 GLFHVQTLRLVTNISAVDVTCSISIPFLGEEKIATFSLSGWGGGGSGGGGGSGGGGSE
 PRGPTIKPCPPCKCPAPNLLGGPSVFIFPPKIKDVLMLISLPIVTCVVVDVSEDDPDVQ
 ISWFVNNVEVHTAQQTQTHREDYNSTLRVVSALPIQHQDWMSGKEFKCKVNNKDLPA
 PIERTISKPKGSVRAPQVYVLPPEEEMTKKQVTLTCMVTDFMPEDIYVEWTNNGKT
 ELNYKNTEPVLDSGYSYFMYSKLRVEKKNWVERNSYSCSVVHEGLHNHHTTKSFS
 RTPGK

Purity 80%

Storage Store it under sterile conditions at -20 to -80 centigrade. It is recommended that the protein be aliquoted for optimal storage. Avoid repeated freeze-thaw cycles.

Concentration 0.2mg/tube

GENE INFORMATION

Gene Name [BTNL2 butyrophilin like 2 \[Homo sapiens \(human\) \]](#)

Official Symbol [BTNL2](#)

Synonyms SS2; BTN7; BTL-II; HSBLMHC1

Gene ID [56244](#)

mRNA Refseq [NM_001304561](#)

Protein Refseq [NP_001291490](#)

 Tel: 1-631-559-9269 1-516-512-3133

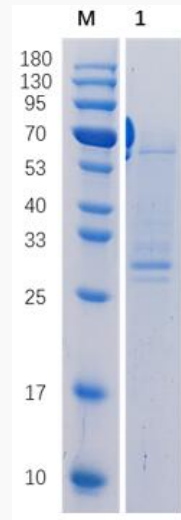
 Email: info@creative-biomart.com  Fax: 1-631-938-8127

 45-1 Ramsey Road, Shirley, NY 11967, USA

MIM 606000

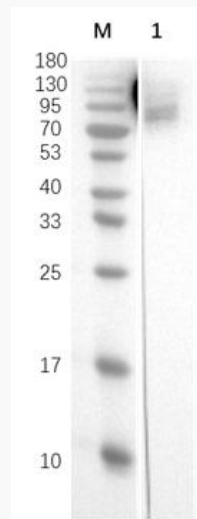
UniProt ID Q9UIR0

SDS-PAGE



Reducing 12% SDS-PAGE analysis profile of purified BTNL2 (CBB stained).

WB



 Tel: 1-631-559-9269 1-516-512-3133

 Email: info@creative-biomart.com  Fax: 1-631-938-8127

 45-1 Ramsey Road, Shirley, NY 11967, USA



Reducing 12% wb analysis profile of purified BTNL2 (primary antibody: HRP, Rabbit Anti-mouse IgG).

 Tel: 1-631-559-9269 1-516-512-3133

 Email: info@creative-biomart.com  Fax: 1-631-938-8127

 45-1 Ramsey Road, Shirley, NY 11967, USA