

Recombinant Human BTNL2 protein, hFc-tagged

Cat. No. BTNL2-4538H Lot. No. (See product label)

SPECIFICATION

| | |
|-------------------------|---|
| Product Overview | Recombinant Human BTNL2 protein(Q9UIR0)(24-457 aa), fused with C-terminal hFc tag, was expressed in Mammalian Cells. |
| Species | Human |
| Source | Mammalian Cells |
| ProteinLength | 24-457 aa |
| Form | For liquid formulations, the standard storage buffer consists of a Tris or PBS based solution supplemented with 5-50% glycerol. When provided as lyophilized powder, the product undergoes freeze-drying from a Tris- or PBS-based formulation containing 6% trehalose, adjusted to pH 8.0 prior to the lyophilization process. |
| Molecular Mass | 75.9 kDa |
| AASequence | <p>KQSEDFRVIGPAHPILAGVGEDALLTCQLLPKRRTTMHVEVRWYRSEPSTPVFVHRD GVEVTEMQMEEYRGWVEWIENGIKGNVALKIHNIQPSDNGQYWCHFQDGNYCGE TLLLLKVAGLGSAPSIHMEGPGESGVQLVCTARGWFPEPQVYWEDIRGEKLLAVSE HRIQDKDGLFYAEATLVVRNASAESVSCLVHNPVLTEEKGSVISLPEKLQTELASLKV NGPSQPILVRVGEDIQLTCTYLSPKANAQSMEVRWDRSHRYPAVHVYMDGDHVAGE QMAEYRGRTVLVSDAIDEGRLTLQILSARPSDDGQYRCLFEKDDVYQEASLDLKVVS LGSSPLITVEGQEDGEMQPMCSSDGWFPQPHVPWRDMEGKTIPSSSQALTQGS GLFHVQTLRLVTNISAVDVTCSISIPFLGEEKIATFSLSES</p> |

 Tel: 1-631-559-9269 1-516-512-3133

 Email: info@creative-biomart.com  Fax: 1-631-938-8127

 45-1 Ramsey Road, Shirley, NY 11967, USA

| | |
|-----------------------|--|
| Purity | Greater than 90% as determined by SDS-PAGE. |
| Storage | Store at -20°C/-80°C upon receipt, aliquoting is necessary for mutiple use. Avoid repeated freeze-thaw cycles. |
| Reconstitution | Please reconstitute protein indeionized sterile water to a concentration of 0.1-1.0 mg/mL. Aliquot for long-term storage at -80°C. |

GENE INFORMATION

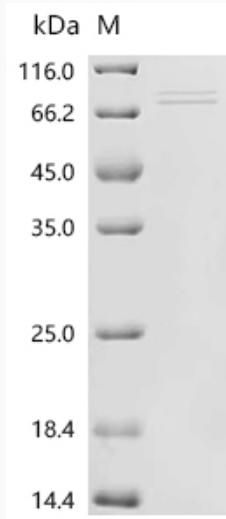
| | |
|------------------------|--|
| Gene Name | BTNL2 butyrophilin-like 2 (MHC class II associated) [Homo sapiens] |
| Official Symbol | BTNL2 |
| Synonyms | SS2; BTL-II; HSBLMHC1 |
| Gene ID | 56244 |
| mRNA Refseq | NM_019602.1 |
| Protein Refseq | NP_062548.1 |
| MIM | 606000 |
| UniProt ID | Q9UIR0 |

 Tel: 1-631-559-9269 1-516-512-3133

 Email: info@creative-biomart.com  Fax: 1-631-938-8127

 45-1 Ramsey Road, Shirley, NY 11967, USA

SDS-PAGE



 Tel: 1-631-559-9269 1-516-512-3133

 Email: info@creative-biomart.com  Fax: 1-631-938-8127

 45-1 Ramsey Road, Shirley, NY 11967, USA