

Recombinant Human BTNL2 protein, hFc-tagged

Cat. No. BTNL2-7565H Lot. No. (See product label)

SPECIFICATION

Product Overview	Recombinant Human BTNL2 protein(Q9UIR0)(24-455aa), fused with C-terminal hFc tag, was expressed in HEK293.
Species	Human
Source	HEK293
ProteinLength	24-455aa
Tag	C-hFc
Form	If the delivery form is liquid, the default storage buffer is Tris/PBS-based buffer, 5%-50% glycerol. If the delivery form is lyophilized powder, the buffer before lyophilization is Tris/PBS-based buffer, 6% Trehalose, pH 8.0.
Molecular Mass	75.8 kDa
Purity	Greater than 90% as determined by SDS-PAGE. Greater than 90% as determined by SEC-HPLC.
Storage	Store at -20°C/-80°C upon receipt, aliquoting is necessary for mutiple use. Avoid repeated freeze-thaw cycles.
Reconstitution	We recommend that this vial be briefly centrifuged prior to opening to bring the contents to the bottom. Please reconstitute protein in deionized sterile water to a

 Tel: 1-631-559-9269 1-516-512-3133

 Email: info@creative-biomart.com  Fax: 1-631-938-8127

 45-1 Ramsey Road, Shirley, NY 11967, USA

concentration of 0.1-1.0 mg/mL. We recommend to add 5-50% of glycerol (final concentration) and aliquot for long-term storage at -20°C/-80°C.

AA Sequence

KQSEDFRVIGPAHPILAGVGEDALLTCQLLPKRRTTMHVEVRWYRSEPSTPVFVHRD
 GVEVTEMQMEEYRGWVEWIENGIKGNVALKIHNIQPSDNGQYWCHFQDGNYCGE
 TLLLLKVAGLGSAPSIHMEGPGESGVQLVCTARGWFFPEPQVYWEDIRGEKLLAVSE
 HRIQDKDGLFYAEATLVVRNASAESVSCLVHNPVLTEEKGSVISLPEKLQTELASLKV
 NGPSQPILVRVGEDIQLTCLYSPKANAQSMEVRWDRSHRYPAVHVYMDGDHVAGE
 QMAEYRGRTVLVSDAIDEGRLTLQILSARPSDDGQYRCLFEKDDVYQEASLDLKVVS
 LGSSPLITVEGQEDGEMQPMCSSDGWFPQPHVPWRDMEGKTIPSSSQALTQGS
 GLFHVQTLRLVTNISAVDVTCSISIPFLGEEKIATFSLSGW

GENE INFORMATION

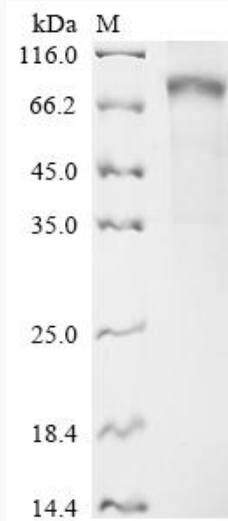
Gene Name	BTNL2 butyrophilin-like 2 (MHC class II associated) [Homo sapiens]
Official Symbol	BTNL2
Synonyms	SS2; BTL-II; HSBLMHC1
Gene ID	56244
mRNA Refseq	NM_019602.1
Protein Refseq	NP_062548.1
MIM	606000
UniProt ID	Q9UIR0

 Tel: 1-631-559-9269 1-516-512-3133

 Email: info@creative-biomart.com  Fax: 1-631-938-8127

 45-1 Ramsey Road, Shirley, NY 11967, USA

SDS-PAGE



 Tel: 1-631-559-9269 1-516-512-3133

 Email: info@creative-biomart.com  Fax: 1-631-938-8127

 45-1 Ramsey Road, Shirley, NY 11967, USA