

# Recombinant Human BTNL3 protein, MBP&His-Avi-tagged, Biotinylated

**Cat. No.** BTNL3-6463H    **Lot. No.** (See product label)

## SPECIFICATION

<b>Product Overview</b>	Biotinylated Recombinant Human BTNL3 protein(Q6UXE8)(18-237aa), fused with N-terminal MBP tag and C-terminal His and Avi tag, was expressed in E.coli.
<b>Species</b>	Human
<b>Source</b>	E.coli
<b>ProteinLength</b>	18-237a.a.
<b>Tag</b>	MBP&His&Avi
<b>Conjugation/Label</b>	Biotin
<b>Form</b>	If the delivery form is liquid, the default storage buffer is Tris/PBS-based buffer, 5%-50% glycerol. If the delivery form is lyophilized powder, the buffer before lyophilization is Tris/PBS-based buffer, 6% Trehalose, pH 8.0.
<b>Molecular Mass</b>	72.3 kDa
<b>Purity</b>	Greater than 85% as determined by SDS-PAGE.
<b>Storage</b>	Store at -20°C/-80°C upon receipt, aliquoting is necessary for mutiple use. Avoid repeated freeze-thaw cycles.

 Tel: 1-631-559-9269    1-516-512-3133

 Email: [info@creative-biomart.com](mailto:info@creative-biomart.com)     Fax: 1-631-938-8127

 45-1 Ramsey Road, Shirley, NY 11967, USA

**Reconstitution** We recommend that this vial be briefly centrifuged prior to opening to bring the contents to the bottom. Please reconstitute protein in deionized sterile water to a concentration of 0.1-1.0 mg/mL. We recommend to add 5-50% of glycerol (final concentration) and aliquot for long-term storage at -20°C/-80°C.

**AA Sequence** QWQVTGPGKQVQALVGEDAVFSCSLFPETSAEAMEVRRFRNQFHAVVHLYRDGED  
WESKQMPQYRGRTEFVKDSIAGGRVSLRLKNITPSDIGLYGCWFSSQIYDEEATWE  
LRVAALGSLPLISIVGYVDGGIQLLCLSSGWFPQPTAKWKGPQGGDLSSDSRANAD  
GYSLYDVEISIIVQENAGSILCSIHLAEQSHEVESKVLIGETFFQPSPWRLAS

**Conjugation** Biotin

## GENE INFORMATION

**Gene Name** [BTNL3 butyrophilin-like 3 \[ Homo sapiens \]](#)

**Official Symbol** [BTNL3](#)

**Synonyms** BTNL3; butyrophilin-like 3; butyrophilin-like protein 3; BTNLR; butyrophilin like receptor; butyrophilin-like receptor;

**Gene ID** [10917](#)

**mRNA Refseq** [NM\\_197975](#)

**Protein Refseq** [NP\\_932079](#)

**MIM** [606192](#)

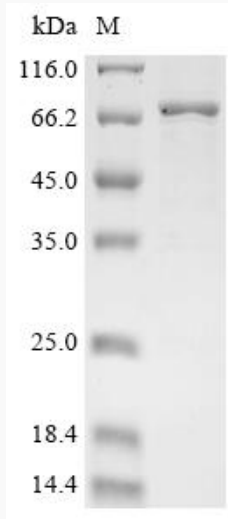
**UniProt ID** [Q6UXE8](#)

 Tel: 1-631-559-9269 1-516-512-3133

 Email: [info@creative-biomart.com](mailto:info@creative-biomart.com)  Fax: 1-631-938-8127

 45-1 Ramsey Road, Shirley, NY 11967, USA

**SDS-PAGE**



 Tel: 1-631-559-9269 1-516-512-3133

 Email: [info@creative-biomart.com](mailto:info@creative-biomart.com)  Fax: 1-631-938-8127

 45-1 Ramsey Road, Shirley, NY 11967, USA