

# Recombinant Full Length Human BTNL8 Protein, C-Flag-tagged

Cat. No. BTNL8-1297HFL Lot. No. (See product label)

## SPECIFICATION

<b>Product Overview</b>	Recombinant Full Length Human BTNL8 Protein, fused to Flag-tag at C-terminus, was expressed in Mammalian cells.
<b>Species</b>	Human
<b>Source</b>	Mammalian Cells
<b>Description</b>	Predicted to enable signaling receptor binding activity. Predicted to be involved in T cell receptor signaling pathway and regulation of cytokine production. Predicted to be located in plasma membrane. Predicted to be active in external side of plasma membrane.
<b>Form</b>	25 mM Tris HCl, pH 7.3, 100 mM glycine, 10% glycerol.
<b>Molecular Mass</b>	56.6 kDa
<b>AA Sequence</b>	<p>MALMLSLVLSLLKLGSGQWQVFGPDKPVQALVGEDAASFSCFLSPKTNAEAMEVRFF            RGQFSSVVHLYRDG KDQPFMQMPQYQGRTKLVKDSIAEGRISLRLENITVLDAGLY            GCRISSQSYQKAIWELQVSALGSVPLI SITGYVDRDIQLLCQSSGWFPPTAKWKG            PQQQDLSTDSRTNRDMHGLFDVEISLTVQENAGSISCSMRH AHLREVESRVQIGD            TFFEPISWHLATKVLGILCCGLFFGIVGLKIFFSKFQWKIQAELDWRKHKHQAEL RDA            RKHAVEVTLDPETAHPKLCVSDLKTVTHRKAPQEVPHSEKRFTRKSVVASQSFSQAG            KHYWEVDGGHN KRWRVGVCRDDVDRRKEYVTLSPDHGYWVLRNLNGEHLTYFTLNP            RFISVFPRTPTKIGVFLDYECGTISF FNINDQSLIYTLTCRFEGLLRPIYIEYPSYNEQN</p>

Tel: 1-631-559-9269 1-516-512-3133

Email: [info@creative-biomart.com](mailto:info@creative-biomart.com) Fax: 1-631-938-8127

45-1 Ramsey Road, Shirley, NY 11967, USA

GTPIVICPVTQESEKEASWQRASAI PETSNSSESSQA  
 TTPFLPRGEMTRTRPLEQKLISEEDLAANDILDYKDDDDKV

<b>Purity</b>	> 80% as determined by SDS-PAGE and Coomassie blue staining.
<b>Stability</b>	Stable for 12 months from the date of receipt of the product under proper storage and handling conditions. Avoid repeated freeze-thaw cycles.
<b>Storage</b>	Store at -80 centigrade.
<b>Concentration</b>	>50 ug/mL as determined by microplate BCA method.
<b>Preparation</b>	Recombinant protein was captured through anti-DDK affinity column followed by conventional chromatography steps.
<b>Protein Families</b>	Druggable Genome, Transmembrane
<b>Full Length</b>	Full L.

## GENE INFORMATION

<b>Gene Name</b>	BTNL8 butyrophilin like 8 [ Homo sapiens (human) ]
<b>Official Symbol</b>	BTNL8
<b>Synonyms</b>	BTN9.2
<b>Gene ID</b>	79908
<b>mRNA Refseq</b>	NM_001040462.3

 Tel: 1-631-559-9269 1-516-512-3133

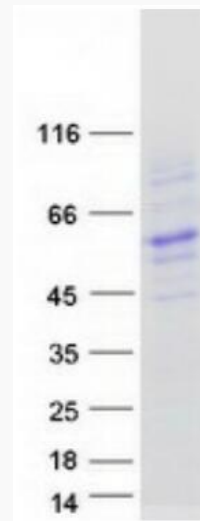
 Email: [info@creative-biomart.com](mailto:info@creative-biomart.com)  Fax: 1-631-938-8127

 45-1 Ramsey Road, Shirley, NY 11967, USA


**Protein Refseq** NP\_001035552.1

**MIM** 615606


**UniProt ID** Q6UX41



Coomassie blue staining of purified BTNL8 protein.

 Tel: 1-631-559-9269 1-516-512-3133

 Email: [info@creative-biomart.com](mailto:info@creative-biomart.com)  Fax: 1-631-938-8127

 45-1 Ramsey Road, Shirley, NY 11967, USA