

# Recombinant Human BTNL8 Protein, Myc/DDK-tagged, C13 and N15-labeled

**Cat. No.** BTNL8-986H    **Lot. No.** (See product label)

## SPECIFICATION

### Product Overview

BTNL8 MS Standard C13 and N15-labeled recombinant protein (NP\_001035552) with a C-terminal MYC/DDK tag, was expressed in HEK293 cells.

### Species

Human

### Source

HEK293

### Description

BTNL8 (Butyrophilin Like 8) is a Protein Coding gene. Among its related pathways are Butyrophilin (BTN) family interactions and Innate Immune System. An important paralog of this gene is BTNL3.

### Molecular Mass

56.6 kDa

### AA Sequence

MALMLSLVLSLLKLGSGQWQVFGPKVPVQALVGEDAAFSCFLSPKTNAEAMEVRFF  
 RGQFSSVVHLYRDGKDQPFMQMPQYQGRTKLVKDSIAEGRISLRLENITVLDAGLY  
 GCRISSQSYQKAIWELQVSALGSVPLISITGYVDRDIQLLCQSSGWFPPTAKWKG  
 PQGQDLSTDSRTNRDMHGLFDVEISLTVQENAGSISCSMRHAHLSREVESRVQIGD  
 TFFEPISWHLATKVLGILCCGLFFGIVGLKIFFSKFQWKIQAELDWRRKHGQAELRDA  
 RKHAVEVTLDPETAHPKLCVSDLKTVTHRKAPQEVPHSEKRFRTRKSVVASQSFAQG  
 KHYWEVDGGHNRWRVGVCRDDVDRRKEYVTLSPDHGHWLRLNGEHLVFTLNP  
 RFISVFPRTPTKIGVFLDYECGTISFFNINDQSLIYTLTCRFEGLLRPYIEYPSYNEQN  
 GTPVICPVTQESEKEASWQRASAIPESTSSESSQATTPFLPRGEMTRTRPLEQKLI  
 SEEDLAANDILDYKDDDDKV

 Tel: 1-631-559-9269    1-516-512-3133

 Email: [info@creative-biomart.com](mailto:info@creative-biomart.com)     Fax: 1-631-938-8127

 45-1 Ramsey Road, Shirley, NY 11967, USA



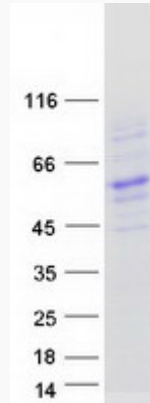
<b>Purity</b>	> 80% as determined by SDS-PAGE and Coomassie blue staining
<b>Stability</b>	Stable for 3 months from receipt of products under proper storage and handling conditions.
<b>Storage</b>	Store at -80 centigrade. Avoid repeated freeze-thaw cycles.
<b>Concentration</b>	50 µg/mL as determined by BCA
<b>Storage Buffer</b>	100 mM glycine, 25 mM Tris-HCl, pH 7.3.

## GENE INFORMATION

<b>Gene Name</b>	BTNL8 butyrophilin-like 8 [ Homo sapiens (human) ]
<b>Official Symbol</b>	BTNL8
<b>Synonyms</b>	BTNL8; butyrophilin-like 8; butyrophilin-like protein 8; FLJ21458; B7-H5 costimulatory molecule; FLJ51528; MGC149619;
<b>Gene ID</b>	79908
<b>mRNA Refseq</b>	NM_001040462
<b>Protein Refseq</b>	NP_001035552
<b>MIM</b>	615606
<b>UniProt ID</b>	Q6UX41



**SDS-PAGE**



☎ Tel: 1-631-559-9269 1-516-512-3133

☎ Email: [info@creative-biomart.com](mailto:info@creative-biomart.com) ☎ Fax: 1-631-938-8127

☎ 45-1 Ramsey Road, Shirley, NY 11967, USA