

Recombinant Human BTRC protein, His-tagged

Cat. No. BTRC-11H Lot. No. (See product label)

SPECIFICATION

Product Overview	Recombinant Human BTRC protein(1-365 aa), fused with His tag, was expressed in E. coli,
Species	Human
Source	E.coli
ProteinLength	1-365 aa
Form	The purified protein was Lyophilized from sterile PBS (58mM Na ₂ HPO ₄ , 17mM NaH ₂ PO ₄ , 68mM NaCl, pH7.4). 5 % trehalose and 5 % mannitol are added as protectant before lyophilization. The elution buffer contain 300mM imidazole.
AA Sequence	MDPAEAVLQEKALKFMCSMPRSLWLGCSSLADSMPSLRCLYNPGTGALTAFQNSS EREDCNGEPPRKIIPEKNSLRQTYNSCARLCLNQETVCLASTAMKTENCVAKTKLA NGTSSMIVPKQRKLSASYEKEKELCVKYFEQWSESDQVEFVEHLISQMCHYQHGI NSYLKPLMLQRDFITALPARGLDHIAENILSYLDAKSLCAAELVCKEWYRVTS DGM LW KKLIERMVRTDSLWRGLAERRGWGQYLFKNKPPDGNAPPNSFYRALYPKIIQDIETIE SNWRCGRHSLQRIHCRSETSKGVYCLQYDDQKIVSGLRDNTIKIWDKNTLECKRILT GHTGSVLCLQYDERVIITGSSDSTV
Purity	75%, by SDS-PAGE with Coomassie Brilliant Blue staining.
Storage	Short-term storage: Store at 2-8°C for (1-2 weeks). Long-term storage: Aliquot and store at -20°C to -80°C for up to 3 months,

 Tel: 1-631-559-9269 1-516-512-3133

 Email: info@creative-biomart.com  Fax: 1-631-938-8127

 45-1 Ramsey Road, Shirley, NY 11967, USA

reconstitution with sterile water and addition of an equal volume of glycerol. Avoid repeat freeze-thaw cycles.

Reconstitution

Reconstitute at 0.25 g/μl in 200 μl sterile water for short-term storage. After reconstitution with sterile water, if glycerol has no effect on subsequent experiments, it is recommended to add an equal volume of glycerol for long-term storage.

GENE INFORMATION

Gene Name [BTRC beta-transducin repeat containing E3 ubiquitin protein ligase \[Homo sapiens \]](#)

Official Symbol [BTRC](#)

Synonyms

BTRC; beta-transducin repeat containing E3 ubiquitin protein ligase; beta transducin repeat containing; F-box/WD repeat-containing protein 1A; beta TrCP1; betaTrCP; bTrCP; bTrCP1; FBXW1A; Fwd1; beta-TrCP1; E3RSIkappaB; F-box and WD-repeat protein 1B; plkappaBalpha-E3 receptor subunit; F-box and WD repeats protein beta-TrCP; FWD1; FBW1A; FBXW1; BETA-TRCP; MGC4643

Gene ID [8945](#)

mRNA Refseq [NM_001256856](#)

Protein Refseq [NP_001243785](#)

MIM [603482](#)

UniProt ID [Q9Y297](#)

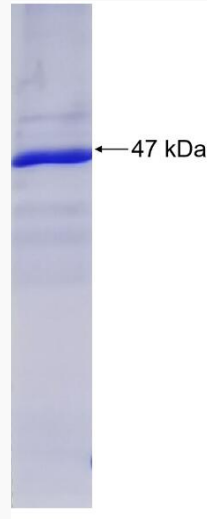
 Tel: 1-631-559-9269 1-516-512-3133

 Email: info@creative-biomart.com  Fax: 1-631-938-8127

 45-1 Ramsey Road, Shirley, NY 11967, USA



SDS-PAGE



☎ Tel: 1-631-559-9269 1-516-512-3133

☎ Email: info@creative-biomart.com ☎ Fax: 1-631-938-8127

☎ 45-1 Ramsey Road, Shirley, NY 11967, USA