

## Recombinant Human BTRC Protein, GST-tagged

Cat. No. BTRC-399H Lot. No. (See product label)

### SPECIFICATION

<b>Product Overview</b>	Human BTRC full-length ORF ( AAH27994.1, 1 a.a. - 605 a.a.) recombinant protein with GST-tag at N-terminal.
<b>Species</b>	Human
<b>Source</b>	Wheat Germ
<b>Description</b>	<p>This gene encodes a member of the F-box protein family which is characterized by an approximately 40 amino acid motif, the F-box. The F-box proteins constitute one of the four subunits of ubiquitin protein ligase complex called SCFs (SKP1-cullin-F-box), which function in phosphorylation-dependent ubiquitination. The F-box proteins are divided into 3 classes: Fbws containing WD-40 domains, Fbls containing leucine-rich repeats, and Fbxs containing either different protein-protein interaction modules or no recognizable motifs. The protein encoded by this gene belongs to the Fbws class; in addition to an F-box, this protein contains multiple WD-40 repeats. This protein is homologous to Xenopus bTrCP1, yeast Met30, Neurospora Scon2 and Drosophila Slimb proteins. It interacts with HIV-1 Vpu and connects CD4 to the proteolytic machinery. It also associates specifically with phosphorylated I<math>\kappa</math>B<math>\alpha</math> and beta-catenin destruction motifs, probably functioning in multiple transcriptional programs by activating the NF-<math>\kappa</math>B pathway and inhibiting the beta-catenin pathway.</p>
<b>Form</b>	50 mM Tris-HCl, 10 mM reduced Glutathione, pH=8.0 in the elution buffer.

 Tel: 1-631-559-9269 1-516-512-3133

 Email: [info@creative-biomart.com](mailto:info@creative-biomart.com)  Fax: 1-631-938-8127

 45-1 Ramsey Road, Shirley, NY 11967, USA

<b>Molecular Mass</b>	95.3 kDa
<b>AA Sequence</b>	<p>MDPAEAVLQEKALKFMCSMPRSLWLGCSLADSMPSLRCLYNPGTGALTAFQNSS  EREDCNGEPPRKIIPEKNSLRQTYNSCARLCLNQETVCLASTAMKTENCVAKTKLA  NGTSSMIVPKQRKLSASYEKEKELCVKYFEQWSESDQVEFVEHLISQMCHYQHGI  NSYLKPLMLQRDFITALPARGLDHIAENILSYLDAKSLCAAELVCKEWYRVTS DGM LW  KKLIERMVRTDSLWRGLAERRGWQYLFKNKPPDGNAPPNSFYRALYPKIIQDIETIE  SNWRCGRHSLQRIHCRSETSKGVYCLQYDDQKIVSGLRDNTIKIWDKNTLECKRILT  GHTGSVLCLQYDERVIITGSSDSTVRVWDVNTGEMLNTLIHHCEAVLHLRFNNGMM  VTCSKDRSIAVWDMASPTDITLRRVLVGHRAAVNVVDFDDKYIVSASGDRTIKVWNT  STCEFVRTLNHGKRGIAQLQYRDRLVVS GSSDNTIRLWDIECGACL RVLEGHEELVR  CIRFDNKRIVSGAYDGKIKVWDLVAALDPRAPAGTLCLRTLVEHSGRVFRLQFDEFQI  VSSSHDDTILIWDFLNDPAAQAEPSPSRPTYTYISR</p>
<b>Quality Control Test</b>	12.5% SDS-PAGE Stained with Coomassie Blue.
<b>Storage</b>	Store at -80 centigrade. Aliquot to avoid repeated freezing and thawing.
<b>Storage Buffer</b>	50 mM Tris-HCl, 10 mM reduced Glutathione, pH=8.0 in the elution buffer.

## GENE INFORMATION

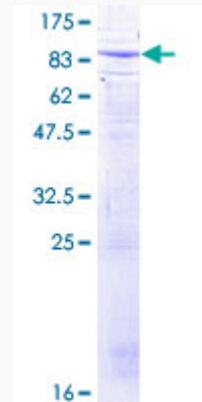
<b>Gene Name</b>	BTRC beta-transducin repeat containing E3 ubiquitin protein ligase [ Homo sapiens ]
<b>Official Symbol</b>	BTRC
<b>Synonyms</b>	<p>BTRC; beta-transducin repeat containing E3 ubiquitin protein ligase; beta transducin repeat containing; F-box/WD repeat-containing protein 1A; beta TrCP1; betaTrCP; bTrCP; bTrCP1; FBXW1A; Fwd1; beta-TrCP1; E3RSIkappaB; F-box and WD-repeat protein 1B; plkappaBalph a-E3 receptor subunit; F-box and WD repeats protein beta-TrCP; FWD1; FBW1A; FBXW1; BETA-TRCP; MGC4643;</p>

 Tel: 1-631-559-9269 1-516-512-3133

 Email: [info@creative-biomart.com](mailto:info@creative-biomart.com)  Fax: 1-631-938-8127

 45-1 Ramsey Road, Shirley, NY 11967, USA

Gene ID	8945
mRNA Refseq	NM_001256856
Protein Refseq	NP_001243785
MIM	603482
UniProt ID	Q9Y297



Tel: 1-631-559-9269 1-516-512-3133

Email: [info@creative-biomart.com](mailto:info@creative-biomart.com) Fax: 1-631-938-8127

45-1 Ramsey Road, Shirley, NY 11967, USA