

Recombinant Full Length Human BUB1 Protein, C-Flag-tagged

Cat. No. BUB1-1746HFL Lot. No. (See product label)

SPECIFICATION

Product Overview	Recombinant Full Length Human BUB1 Protein, fused to Flag-tag at C-terminus, was expressed in Mammalian cells.
Species	Human
Source	Mammalian Cells
Description	This gene encodes a serine/threonine-protein kinase that play a central role in mitosis. The encoded protein functions in part by phosphorylating members of the mitotic checkpoint complex and activating the spindle checkpoint. This protein also plays a role in inhibiting the activation of the anaphase promoting complex/cyclosome. This protein may also function in the DNA damage response. Mutations in this gene have been associated with aneuploidy and several forms of cancer. Alternate splicing results in multiple transcript variants.
Form	25 mM Tris HCl, pH 7.3, 100 mM glycine, 10% glycerol.
Molecular Mass	122.2 kDa
AA Sequence	MDTPENVLQMLEAHMQSYKGN DPLGEWERYIQWVEENFPENKEYLITLLEHLMKEF LDKKKYHNDPRFIS YCLKFAEYNSDLHQFFFLYNHGIGTLSSPLYIAWAGHLEAQQ ELQHASAVLQRGIQNQAEPREFLQQQY RLFQTRLTETHLPAQARTSEPLHNVQVLN QMITSKSNPGNNMACISKNQSGSELSGVISSACDKESNMERR VITISKSEYSVHSSLA SKVDVEQVVMYCKEKLIRGESEFSFEELRAQKYNQRRKHEQWVNEDRHVMKRKE ANAFEEQLLKQKMDDELHKKLHQVVETSHEDLPASQERSEVNPARGPSVGSQQEL

 Tel: 1-631-559-9269 1-516-512-3133

 Email: info@creative-biomart.com  Fax: 1-631-938-8127

 45-1 Ramsey Road, Shirley, NY 11967, USA

RAPCLPVTYQQTPVN MEKNPREAPPVVPPLANAISAALVSPATSQSIAPPVPLKAQT
 VTDSMFAVASKDAGCVNKSTHEFKPQSG AEIKEGCETHKVANTSSFHTTPNTSLGM
 VQATPSKVQPSPTVHTKEALGFIMNMFQAPTLDPDISDDKDEW QSLDQNEFAFEAQF
 QKNVRSSGAWGVNKISSLSSAFHVFEDGNKENYGLPQPKNKPTGARTFGERSVSR
 LPSKPKEEVPHAEFLDDSTVWGIRCNTLAPSPKSPGDFTSAAQLASTPFHKLPE
 SVHILEDKENVVA KQCTQATLDSCEENMVVPSRDGKFSPIQEKSPKQALSSHMYS
 SLLRLSQPAAGGVLTC EAELGVEACRL TDTAAIAEDPPDAIAGLQAEWMQMSSLG
 TVDAPNFIVGNPWDDKLIFKLLSGLSKPVSSYPNTFEWQCK LPAIKPKTEFQLGSKL
 VYVHLLGEGAFQVYEATQGDLDNAKNKQKFVLKVQKPANPWEFYIGTQLMER L
 KPSMQHMFYSAHLFQNGSVLVGELYSYGTLLNAINLYKNTPEKVMPPQGLVISFA
 MRMLYMIEQVHD CEIHHGDIKPDNFILGNFLEQDDEDDLSAGLALIDLQSIDMKLF
 PKGTIFTAKCETSGFQCVEMLSNK PWNQIDYFGVAATVYCMLFGTYMKVKNEGG
 ECKPEGLFRRLPHLDMWNEFFHVMLNIPDCHHLPSDLL
 RQKLKKVFQQHYTNKIRALRNRLIVLLECKRSRKRTRRPLEQKLISEEDLAANDILDY
 KDDDDKV

Purity > 80% as determined by SDS-PAGE and Coomassie blue staining.

Stability Stable for 12 months from the date of receipt of the product under proper storage and handling conditions. Avoid repeated freeze-thaw cycles.

Storage Store at -80 centigrade.

Concentration >50 ug/mL as determined by microplate BCA method.

Preparation Recombinant protein was captured through anti-DDK affinity column followed by conventional chromatography steps.

Protein Families Druggable Genome, Protein Kinase

 Tel: 1-631-559-9269 1-516-512-3133

 Email: info@creative-biomart.com  Fax: 1-631-938-8127

 45-1 Ramsey Road, Shirley, NY 11967, USA

Protein Pathways	Cell cycle, Oocyte meiosis, Progesterone-mediated oocyte maturation
-------------------------	---

Full Length	Full L.
--------------------	---------

GENE INFORMATION

Gene Name	BUB1 BUB1 mitotic checkpoint serine/threonine kinase [Homo sapiens (human)]
------------------	---

Official Symbol	BUB1
------------------------	------

Synonyms	BUB1A; BUB1L; hBUB1; MCPH30
-----------------	-----------------------------

Gene ID	699
----------------	-----

mRNA Refseq	NM_004336.5
--------------------	-------------

Protein Refseq	NP_004327.1
-----------------------	-------------

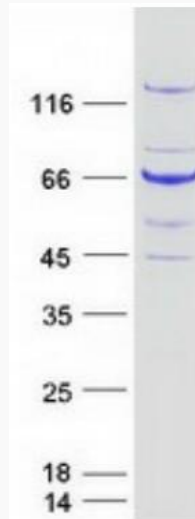
MIM	602452
------------	--------

UniProt ID	O43683
-------------------	--------

 Tel: 1-631-559-9269 1-516-512-3133

 Email: info@creative-biomart.com  Fax: 1-631-938-8127

 45-1 Ramsey Road, Shirley, NY 11967, USA



Coomassie blue staining of purified BUB1 protein.

 Tel: 1-631-559-9269 1-516-512-3133

 Email: info@creative-biomart.com  Fax: 1-631-938-8127

 45-1 Ramsey Road, Shirley, NY 11967, USA