

# Recombinant Human BUB1 Protein, Myc/DDK-tagged, C13 and N15-labeled

**Cat. No.** BUB1-2408H    **Lot. No.** (See product label)

## SPECIFICATION

<b>Product Overview</b>	BUB1 MS Standard C13 and N15-labeled recombinant protein (NP_004327) with a C-terminal MYC/DDK tag, was expressed in HEK293 cells.
<b>Species</b>	Human
<b>Source</b>	HEK293
<b>Description</b>	This gene encodes a serine/threonine-protein kinase that play a central role in mitosis. The encoded protein functions in part by phosphorylating members of the mitotic checkpoint complex and activating the spindle checkpoint. This protein also plays a role in inhibiting the activation of the anaphase promoting complex/cyclosome. This protein may also function in the DNA damage response. Mutations in this gene have been associated with aneuploidy and several forms of cancer. Alternate splicing results in multiple transcript variants.
<b>Molecular Mass</b>	122.4 kDa
<b>AA Sequence</b>	MDTPENVLQMLEAHMQSYKGN DPLGEWERYIQWVEENFPENKEYLITLLEHLMKEF LDKKKYHNDPRFISYCLKFAEYNSDLHQFFFLYNHGIGTLSSPLYIAWAGHLEAQGE LQHASAVLQRGIQNQAEPREFLQQQYRLFQTRLTETHLPAQARTSEPLHNVQVLNQ MITSKSNPGNNMACISKNQGS ELSGVISSACDKESNMERRVITISKSEYSVHSSLASK VDVEQVVMYCKEKLIRGESEFSFEELRAQKYNQRRKHEQWVNEDRHYMKRKEANA FEEQLLKQKMDLHKKLHQVVETSHEDLPASQERSEVNPARGPSVGSQQELRAP

 Tel: 1-631-559-9269    1-516-512-3133

 Email: [info@creative-biomart.com](mailto:info@creative-biomart.com)     Fax: 1-631-938-8127

 45-1 Ramsey Road, Shirley, NY 11967, USA

CLPVTYQQTPVNMEKNPREAPPVVPPLANAIISAALVSPATSQSIAPPVPLKAQTVTD  
 SMFAVASKDAGCVNKSTHEFKPQSGAEIKEGCETHKVANTSSFHHTTPNTSLGMVQA  
 TPSKVQPSPTVHTKEALGFIMNMFQAPTLDPDISDDKDEWQSLDQNEFAEAQFQKN  
 VRSSGAWGVNKIISLSSAFHVFEDGNKENYGLPQPKNKPTGARTFGERSVSRPLPS  
 KPKEEVPHAAEFLDDSTVWGIRCNKTLAPSPKSPGDFTSAAQLASTPFHKLPVESVH  
 ILEDKENVVAKQCTQATLDSCEENMVVPSRDGKFSPIQEKSPKQALSSHMYASLLR  
 LSQPAAGGVLTC EAELGVEACRLTDTDA AIAEDPPDAIAGLQAEWMQMSSLGTVDA  
 PNFIVGNPWDDKLIFKLLSGLSKPVSSYPNTFEWQCKLPAIKPKTEFQLGSKLVVYVHH  
 LLGEGAFQAQVYEATQGD LND AKNKQKFVLKVQKPANPWEFYIGTQLMERLKPSMQ  
 HMFMKFYSAHLFQNGSVLVGELYSYGTLLNAINLYKNTPEKVMPPQGLVISFAMRMLY  
 MIEQVHDCEIIHGD IKPDNFILGN GFLEQDDEDDL SAGLALIDLGQSIDMKLFPKGTIFT  
 AKCETSGFQCVEMLSNKPWNYQIDYFGVAATVYCMLFGTYMKVKNEGGECKPEGL  
 FRRLPHLDMWNEFFHVMLNIPDCHHLPSLDLLRQKLKKVFQQHYTNKIRALRNRLIVL  
 LLECKRSRKTRTRPLEQKLISEEDLAANDILDYKDDDDKV

**Purity** > 80% as determined by SDS-PAGE and Coomassie blue staining

**Stability** Stable for 3 months from receipt of products under proper storage and handling conditions.

**Storage** Store at -80 centigrade. Avoid repeated freeze-thaw cycles.

**Concentration** 50 µg/mL as determined by BCA

**Storage Buffer** 100 mM glycine, 25 mM Tris-HCl, pH 7.3.

## GENE INFORMATION

**Gene Name** BUB1 BUB1 mitotic checkpoint serine/threonine kinase [ Homo sapiens (human) ]

**Official Symbol** BUB1

 Tel: 1-631-559-9269 1-516-512-3133

 Email: [info@creative-biomart.com](mailto:info@creative-biomart.com)  Fax: 1-631-938-8127

 45-1 Ramsey Road, Shirley, NY 11967, USA

**Synonyms** BUB1; budding uninhibited; BUB1L, budding uninhibited by benzimidazoles 1 (yeast homolog); mitotic checkpoint serine/threonine-protein kinase BUB1; BUB1A; hBUB1; mitotic spindle checkpoint kinase; putative serine/threonine-protein kinase; BUB1 budding uninhibited by benzimidazoles 1 homolog; BUB1L;

**Gene ID** [699](#)

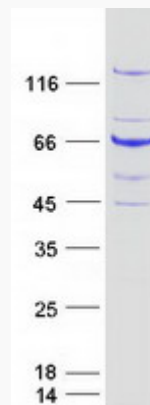
**mRNA Refseq** [NM\\_004336](#)

**Protein Refseq** [NP\\_004327](#)

**MIM** [602452](#)

**UniProt ID** [O43683](#)

**SDS-PAGE**



 Tel: 1-631-559-9269 1-516-512-3133

 Email: [info@creative-biomart.com](mailto:info@creative-biomart.com)  Fax: 1-631-938-8127

 45-1 Ramsey Road, Shirley, NY 11967, USA