

## Recombinant Human BUB1 Protein, GST-tagged

**Cat. No.** BUB1-400H    **Lot. No.** (See product label)

### SPECIFICATION

<b>Product Overview</b>	Human BUB1 full-length ORF ( AAH28201.1, 1 a.a. - 1085 a.a.) recombinant protein with GST-tag at N-terminal.
<b>Species</b>	Human
<b>Source</b>	Wheat Germ
<b>Description</b>	This gene encodes a kinase involved in spindle checkpoint function. The kinase functions in part by phosphorylating a member of the mitotic checkpoint complex and activating the spindle checkpoint. Mutations in this gene have been associated with aneuploidy and several forms of cancer.
<b>Form</b>	50 mM Tris-HCl, 10 mM reduced Glutathione, pH=8.0 in the elution buffer.
<b>Molecular Mass</b>	145.09 kDa
<b>AA Sequence</b>	<p>MDTPENVLQMLEAHMQSYKGN DPLGVWERYIQWVEENFPENKEYLITLLEHLMKEF            LDKKKYHNDPRFISYCLKFAEYNSDLRQFFFLYNHGIGTLSSPLYIAWAGHLEAQGE            LQHASAVLQRGIQNQAEPREFLQQYRLFQTRLTETHLPAQARTSEPLHNVQVLNQ            MITSKSNPGNNMACISKNQGSEL SGVISSACDKESNMERRVITISKSEYSVHSSLASK            VDVEQVVMYCKEKLIRGESEFSFEELRAQKYNQRRKHEQWVNEDRHYMKRKEANA            FEEQLLKQKMDDELHKKLHQVVETSHEDLPASQERSEVNPARGPSVGSQQELRAP            CLPVTYQQTPVNMEKNPREAPPVVPPLANAISAALVSPATSQSIAPPVPLKAQTVTD            SMFAVASKDAGCVNKSTHEFKPQSGAEIKEGCETHKVANTSSFHTTPNTSLGMVQA            TPSKVQPSPTVHTKEALGFIMNMFQAPTLDPDISDDKDEWQSLDQNEFAFEAQFQKN</p>

 Tel: 1-631-559-9269    1-516-512-3133

 Email: [info@creative-biomart.com](mailto:info@creative-biomart.com)     Fax: 1-631-938-8127

 45-1 Ramsey Road, Shirley, NY 11967, USA

VRSSGAWGVNKIISLSSAFHVFEDGNKENYGLPQPKNKPTGARTFGERSVSRLLPS  
 KPKEEVPHAEFLDDSTVWGIRCNKTLAPSPKSPGDFTSAAQLASTPFHKLKLPVESVH  
 ILEDKENVVAKQCTQATLDSCEENMVVPSRDGKFSPIQEKSPKQALSSHMYASLLR  
 LSQPAAGGVLTC EAELGVEACRLTDTDAIAEDPPDAIAGLQAEWMQMSSLGTVDA  
 PNFIVGNPWDDKLIFKLLSGLSKPVSSYPNTFEWQCKLPAIKPKTEFQLGSKLVVYVHH  
 LLGEGAFQVYEATQGDLDNDAKNKQKFVVKVQK PANPWEFYIGTQLMERLKPSMQ  
 HMFMKFYSAHLFQNGSVLVGELYSYGTLLNAINLYKNTPEKVMPQGLVISFAMRMLY  
 MIEQVHDCEIIHGDIKPDNFILGNGFLEQDDEDDL SAGLALIDLGQSIDMKLFPKGTIFT  
 AKCETSGFQCVEMLSNKPWNYQIDYFGVAATVYCMLFGTYMKVKNEGGECKPEGL  
 FRRLPHLDMWNEFFHVMLNIPDCHHLPSLDLLRQKLKVKVQQHYTNKIRALRNRLIVL  
 LLECKRSRK

**Quality Control Test** 12.5% SDS-PAGE Stained with Coomassie Blue.

**Storage** Store at -80 centigrade. Aliquot to avoid repeated freezing and thawing.

**Storage Buffer** 50 mM Tris-HCl, 10 mM reduced Glutathione, pH=8.0 in the elution buffer.

## GENE INFORMATION

**Gene Name** [BUB1 budding uninhibited by benzimidazoles 1 homolog \(yeast\) \[ Homo sapiens \]](#)

**Official Symbol** [BUB1](#)

**Synonyms** BUB1; budding uninhibited; BUB1L, budding uninhibited by benzimidazoles 1 (yeast homolog); mitotic checkpoint serine/threonine-protein kinase BUB1; BUB1A; hBUB1; mitotic spindle checkpoint kinase; putative serine/threonine-protein kinase; BUB1 budding uninhibited by benzimidazoles 1 homolog; BUB1L;

**Gene ID** [699](#)

 Tel: 1-631-559-9269 1-516-512-3133

 Email: [info@creative-biomart.com](mailto:info@creative-biomart.com)  Fax: 1-631-938-8127

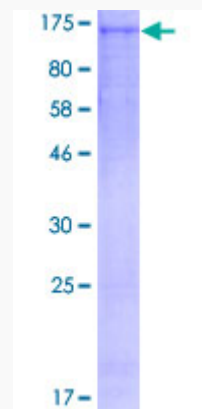
 45-1 Ramsey Road, Shirley, NY 11967, USA

mRNA Refseq [NM\\_004336](#)

Protein Refseq [NP\\_004327](#)

MIM [602452](#)

UniProt ID [O43683](#)



 Tel: 1-631-559-9269 1-516-512-3133

 Email: [info@creative-biomart.com](mailto:info@creative-biomart.com)  Fax: 1-631-938-8127

 45-1 Ramsey Road, Shirley, NY 11967, USA