

## Recombinant Human BUD31 protein, His-tagged

Cat. No. BUD31-3325H Lot. No. (See product label)

### SPECIFICATION

|                         |   |
|-------------------------|---|
| <b>Product Overview</b> | Recombinant Human BUD31 protein(P41223)(159aa), fused with N-terminal His tag, was expressed in E. coli.  |
| <b>Species</b>          | Human   |
| <b>Source</b>           | E.coli  |
| <b>Protein Length</b>   | 159aa(including fusion tag)   |
| <b>Tag</b>              | N-His   |
| <b>Form</b>             | 20mM Tris.Cl, 50mM NaCl, 50% Glycerol, pH8.0.   |
| <b>Molecular Mass</b>   | 19.0kDa(including fusion tag)   |
| <b>Storage</b>          | Store at -80°C and avoid repeated freeze-thaw cycles.   |
| <b>Reconstitution</b>   | It is recommended that sterile water be added to the vial to prepare a stock solution of 0.2 ug/ul. Centrifuge the vial at 4°C before opening to recover the entire contents. |

### GENE INFORMATION

|                        |  |
|------------------------|--|
| <b>Gene Name</b>       | BUD31 BUD31 homolog ( <i>S. cerevisiae</i> ) [ <i>Homo sapiens</i> ] |
| <b>Official Symbol</b> | BUD31  |

 Tel: 1-631-559-9269 1-516-512-3133

 Email: [info@creative-biomart.com](mailto:info@creative-biomart.com)  Fax: 1-631-938-8127

 45-1 Ramsey Road, Shirley, NY 11967, USA

**Synonyms** BUD31; BUD31 homolog (S. cerevisiae); BUD31 homolog (yeast); protein BUD31 homolog; EDG 2; EDG2; fSAP17; functional spliceosome associated protein 17; G10; G10 maternal transcript homolog (Xenopus laevis); YCR063W; protein EDG-2; protein G10 homolog; maternal G10 transcript; G10 maternal transcript homolog; functional spliceosome-associated protein 17; EDG-2; MGC111202;

**Gene ID** [8896](#)

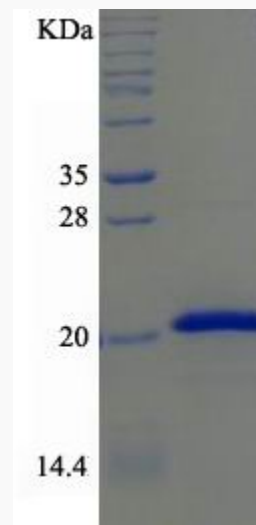
**mRNA Refseq** [NM\\_003910](#)

**Protein Refseq** [NP\\_003901](#)

**MIM** [603477](#)

**UniProt ID** [P41223](#)

**SDS-PAGE**



 Tel: 1-631-559-9269 1-516-512-3133

 Email: [info@creative-biomart.com](mailto:info@creative-biomart.com)  Fax: 1-631-938-8127

 45-1 Ramsey Road, Shirley, NY 11967, USA