

Recombinant Human BUD31 Protein, GST-tagged

Cat. No. BUD31-4604H Lot. No. (See product label)

SPECIFICATION

Product Overview	Human G10 full-length ORF (AAH22821, 1 a.a. - 144 a.a.) recombinant protein with GST-tag at N-terminal.
Species	Human
Source	Wheat Germ
Description	BUD31 (BUD31 Homolog) is a Protein Coding gene. Among its related pathways are mRNA Splicing - Major Pathway and Gene Expression. GO annotations related to this gene include transcription factor activity, sequence-specific DNA binding.
Molecular Mass	41.47 kDa
AA Sequence	MPKVKRSRKAPPDGWELIEPTLDELQKMREAETEPHEGKRKVESLWPIFRIHHQK TRYIFDLFYKRKAISRELYEYCIKEGYADKNLIAKWKKGQYENLCLRCIQTRDTNFG TNCICRVPKSKLEVGRIEEECTHCGCRGCSG
Applications	Enzyme-linked Immunoabsorbent Assay Western Blot (Recombinant protein) Antibody Production Protein Array
Notes	Best use within three months from the date of receipt of this protein.
Storage	Store at -80 centigrade. Aliquot to avoid repeated freezing and thawing.

 Tel: 1-631-559-9269 1-516-512-3133

 Email: info@creative-biomart.com  Fax: 1-631-938-8127

 45-1 Ramsey Road, Shirley, NY 11967, USA

Storage Buffer 50 mM Tris-HCl, 10 mM reduced Glutathione, pH=8.0 in the elution buffer.

GENE INFORMATION

Gene Name BUD31 BUD31 homolog (*S. cerevisiae*) [*Homo sapiens*]

Official Symbol BUD31

Synonyms BUD31; BUD31 homolog (*S. cerevisiae*); BUD31 homolog (yeast); protein BUD31 homolog; EDG 2; EDG2; fSAP17; functional spliceosome associated protein 17; G10; G10 maternal transcript homolog (*Xenopus laevis*); YCR063W; protein EDG-2; protein G10 homolog; maternal G10 transcript; G10 maternal transcript homolog; functional spliceosome-associated protein 17; EDG-2; MGC111202;

Gene ID 8896

mRNA Refseq NM_003910

Protein Refseq NP_003901

MIM 603477

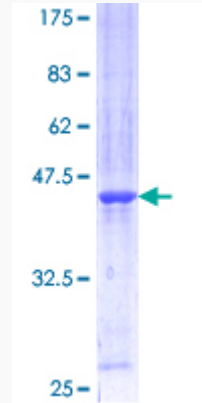
UniProt ID P41223

 Tel: 1-631-559-9269 1-516-512-3133

 Email: info@creative-biomart.com  Fax: 1-631-938-8127

 45-1 Ramsey Road, Shirley, NY 11967, USA

**Quality Control
Testing**



12.5% SDS-PAGE Stained with Coomassie Blue.

 Tel: 1-631-559-9269 1-516-512-3133

 Email: info@creative-biomart.com  Fax: 1-631-938-8127

 45-1 Ramsey Road, Shirley, NY 11967, USA