

Recombinant Human BVES Protein, GST-tagged

Cat. No. BVES-404H **Lot. No.** (See product label)

SPECIFICATION

Product Overview	Human BVES full-length ORF (NP_009004.2, 1 a.a. - 360 a.a.) recombinant protein with GST-tag at N-terminal.
Species	Human
Source	Wheat Germ
Description	This gene encodes a member of the POP family of proteins containing three putative transmembrane domains. This gene is expressed in cardiac and skeletal muscle and may play an important role in development of these tissues. The mouse ortholog may be involved in the regeneration of adult skeletal muscle and may act as a cell adhesion molecule in coronary vasculogenesis. Two transcript variants encoding the same protein have been found for this gene.
Form	50 mM Tris-HCl, 10 mM reduced Glutathione, pH=8.0 in the elution buffer.
Molecular Mass	67.9 kDa
AA Sequence	MNYTESSPLRESTAIGFTPELESIIIPVPSNKTTTCENWREIHHLVFHVANICFAVGLVIPT TLHLHMIFLRGMLTLGCTLYIVWATLYRCALDIMIWNSVFLGVNHLHSYLLYKRPVKI EKELSGMYRRLFEPRLVPPDLFRRLTGQFCMIQTLKKGQTYAAEDKTSVDDRLSILL KGKMKVSYRGHFLHNIYPCAFIDSPEFRSTQMHKGEKFQVTIADDNCRFLCWSRER LTYFLESEPFLEYEIFRYLIGKDITNKLYSLNDPTLNDKAKKLEHQLSLCTQISMLEMR NSIASSSDSDGLHQFLRGTSMSLHVSSPHQRASAKMKPIEEGAEDDDVFEPA SPNTLVHQQLP

 Tel: 1-631-559-9269 1-516-512-3133

 Email: info@creative-biomart.com  Fax: 1-631-938-8127

 45-1 Ramsey Road, Shirley, NY 11967, USA

Quality Control Test	12.5% SDS-PAGE Stained with Coomassie Blue.
Storage	Store at -80 centigrade. Aliquot to avoid repeated freezing and thawing.
Storage Buffer	50 mM Tris-HCl, 10 mM reduced Glutathione, pH=8.0 in the elution buffer.

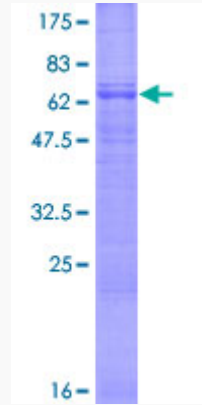
GENE INFORMATION

Gene Name	BVES blood vessel epicardial substance [Homo sapiens]
Official Symbol	BVES
Synonyms	BVES; blood vessel epicardial substance; HBVES; POP1; POPDC1; popeye domain containing 1; popeye protein 1; popeye domain-containing protein 1; MGC42413;
Gene ID	11149
mRNA Refseq	NM_001199563
Protein Refseq	NP_001186492
MIM	604577
UniProt ID	Q8NE79

 Tel: 1-631-559-9269 1-516-512-3133

 Email: info@creative-biomart.com  Fax: 1-631-938-8127

 45-1 Ramsey Road, Shirley, NY 11967, USA



 Tel: 1-631-559-9269 1-516-512-3133

 Email: info@creative-biomart.com  Fax: 1-631-938-8127

 45-1 Ramsey Road, Shirley, NY 11967, USA