

Recombinant Full Length Human BYSL Protein, C-Flag-tagged

Cat. No. BYSL-211HFL Lot. No. (See product label)

SPECIFICATION

Product Overview	Recombinant Full Length Human BYSL Protein, fused to Flag-tag at C-terminus, was expressed in Mammalian cells.
Species	Human
Source	Mammalian Cells
Description	Bystin is expressed as a 2-kb major transcript and a 3.6-kb minor transcript in SNG-M cells and in human trophoblastic teratocarcinoma HT-H cells. Protein binding assays determined that bystin binds directly to trophinin and tastin, and that binding is enhanced when cytokeratins 8 and 18 are present. Immunocytochemistry of HT-H cells showed that bystin colocalizes with trophinin, tastin, and the cytokeratins, suggesting that these molecules form a complex in trophoctoderm cells at the time of implantation. Using immunohistochemistry it was determined that trophinin and bystin are found in the placenta from the sixth week of pregnancy. Both proteins were localized in the cytoplasm of the syncytiotrophoblast in the chorionic villi and in endometrial decidual cells at the uteroplacental interface. After week 10, the levels of trophinin, tastin, and bystin decreased and then disappeared from placental villi.
Form	25 mM Tris HCl, pH 7.3, 100 mM glycine, 10% glycerol.
Molecular Mass	49.4 kDa
AA Sequence	MPKFKAARGVGGQEKHAPLADQILAGNAVRAGVREKRRGRGTGEAEEEEYVGPRLS RRILQQARQQQEELE AEHGTGDKPAAPRERTTRLGPRMPQDGSDDDEDEEWPTLE

 Tel: 1-631-559-9269 1-516-512-3133

 Email: info@creative-biomart.com  Fax: 1-631-938-8127

 45-1 Ramsey Road, Shirley, NY 11967, USA

KAATMTAAGHHAEEVVDPEDERAIEFMNKN PPARRTLADIIMEKLTEKQTEVETV
MSEVSGFPMPQLDPRVLEVYRGVREVLISKYRSGKLPKAFKIIPAL SNWEQILYVTEP
EAWTAAAMYQATRIFASNLKERMAQRFYNLVLLPRVRDDVAEYKRLNFHLYMALKK
AL FKPGAWFKGILIPLCESGTCTLREAIIVGSIITKCSIPVLHSSAAMLKIAEMEYSGAN
SIFLRLLLDKKY ALPYRVLDAVLFHFLGFRTEKRELPVLWHQCLLTLVQRYKADLATD
QKEALLELLRLQPHPQLSPEIRRE
LQSAVPRDVEDVPITVETRTRPLEQKLISEEDLAANDILDYKDDDDKV

Purity	> 80% as determined by SDS-PAGE and Coomassie blue staining.
Stability	Stable for 12 months from the date of receipt of the product under proper storage and handling conditions. Avoid repeated freeze-thaw cycles.
Storage	Store at -80 centigrade.
Concentration	>50 ug/mL as determined by microplate BCA method.
Preparation	Recombinant protein was captured through anti-DDK affinity column followed by conventional chromatography steps.
Protein Families	Stem cell - Pluripotency
Full Length	Full L.

GENE INFORMATION

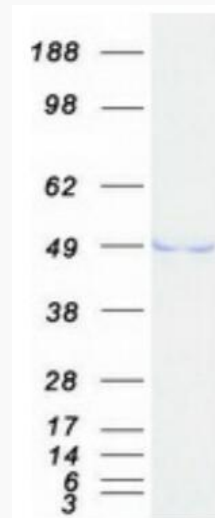
Gene Name	BYSL bystin like [Homo sapiens (human)]
Official Symbol	BYSL
Synonyms	Enp1; BYSTIN

 Tel: 1-631-559-9269 1-516-512-3133

 Email: info@creative-biomart.com  Fax: 1-631-938-8127

 45-1 Ramsey Road, Shirley, NY 11967, USA

Gene ID	705
mRNA Refseq	NM_004053.4
Protein Refseq	NP_004044.3
MIM	603871
UniProt ID	Q13895



Coomassie blue staining of purified BYSL protein.

Tel: 1-631-559-9269 1-516-512-3133

Email: info@creative-biomart.com Fax: 1-631-938-8127

45-1 Ramsey Road, Shirley, NY 11967, USA