

Recombinant Human BYSL Protein, GST-tagged

Cat. No. BYSL-409H **Lot. No.** (See product label)

SPECIFICATION

Product Overview	Human BYSL full-length ORF (AAH07340, 1 a.a. - 324 a.a.) recombinant protein with GST-tag at N-terminal.
Species	Human
Source	Wheat Germ
Description	Bystin is expressed as a 2-kb major transcript and a 3.6-kb minor transcript in SNG-M cells and in human trophoblastic teratocarcinoma HT-H cells. Protein binding assays determined that bystin binds directly to trophinin and tastin, and that binding is enhanced when cytokeratins 8 and 18 are present. Immunocytochemistry of HT-H cells showed that bystin colocalizes with trophinin, tastin, and the cytokeratins, suggesting that these molecules form a complex in trophectoderm cells at the time of implantation. Using immunohistochemistry it was determined that trophinin and bystin are found in the placenta from the sixth week of pregnancy. Both proteins were localized in the cytoplasm of the syncytiotrophoblast in the chorionic villi and in endometrial decidual cells at the uteroplacental interface. After week 10, the levels of trophinin, tastin, and bystin decreased and then disappeared from placental villi.
Form	50 mM Tris-HCl, 10 mM reduced Glutathione, pH=8.0 in the elution buffer.
Molecular Mass	61.38 kDa
AA Sequence	MTAAGHHAEEVVDPEDERAIEFMNKNPPARRTLADIIMEKLTEKQTEVETVMSEVS GFPMPQLDPRVLEVYRGVREVLISKYRSGKLPKAFKIIPALSNWDQILYVTEPEAWTA

 Tel: 1-631-559-9269 1-516-512-3133

 Email: info@creative-biomart.com  Fax: 1-631-938-8127

 45-1 Ramsey Road, Shirley, NY 11967, USA



AAMYQATRIFASNLKERMAQRFYNLVLLPRVRDDVAEYKRLNFHLYMALKKALFKPG
AWFKGILIPCESGTCTLREAIIVGSIITKCSIPVLHSSAAMLKIAEMEYSGANSIFLRLLL
DKKYALPYRVLDALVFHFLGFRTEKRELPVLWHQCLLTLVQRYKADLATDQKEALLE
LLRLQPHPQLSPEIRRELQSAVPRDVEDVPITVE

Quality Control Test 12.5% SDS-PAGE Stained with Coomassie Blue.

Storage Store at -80 centigrade. Aliquot to avoid repeated freezing and thawing.

Storage Buffer 50 mM Tris-HCl, 10 mM reduced Glutathione, pH=8.0 in the elution buffer.

GENE INFORMATION

Gene Name [BYSL bystin like \[Homo sapiens \(human\) \]](#)

Official Symbol [BYSL](#)

Synonyms Enp1; BYSTIN

Gene ID [705](#)

mRNA Refseq [NM_004053.3](#)

Protein Refseq [NP_004044.3](#)

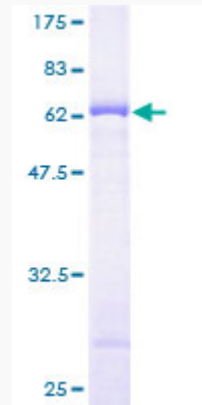
MIM [603871](#)

UniProt ID [Q13895.3](#)

Tel: 1-631-559-9269 1-516-512-3133

Email: info@creative-biomart.com Fax: 1-631-938-8127

45-1 Ramsey Road, Shirley, NY 11967, USA



 Tel: 1-631-559-9269 1-516-512-3133

 Email: info@creative-biomart.com  Fax: 1-631-938-8127

 45-1 Ramsey Road, Shirley, NY 11967, USA