

Recombinant Human BZW2 Protein, Myc/DDK-tagged, C13 and N15-labeled

Cat. No. BZW2-2223H **Lot. No.** (See product label)

SPECIFICATION

Product Overview	BZW2 MS Standard C13 and N15-labeled recombinant protein (NP_054757) with a C-terminal MYC/DDK tag, was expressed in HEK293 cells.
Species	Human
Source	HEK293
Description	May be involved in neuronal differentiation.
Molecular Mass	48.2 kDa
AA Sequence	MNKHQKPVLTGQRFKTRKRDEKEKFEPTVFRDTLVQQLNEAGDDLEAVAKFLDSTG SRLDYRRYADTLFDILVAGSMLAPGGTRIDDGDKTKMTNHCVFSANEDHETIRNYAQ VFNKLIRRYKYLEKAFEDEMKLLLLFLKAFSETEQTKLAMLGILLGNGTLPATILTSLF TDSLVKEGIAASFAVKLFKAWMAEKDANSVTSSLRKANLDRKLELFPVNRQSVDHF AKYFTDAGLKELSDFLRVQQSLGTRKELQKELQERLSQECPIKEVVLYVKEEMKRND LPETA VIGLLWTCIMNAVEW NKKEELVAEQALKHLKQYAPLLAVFSSQGQSELILLQK VQEYCYDNIHFMKAFQKIVVLFYKADVLSEEAILKWKYKEAHVAKGKSVFLDQMKKFV EWLQNAEEEESESEGEENTRTRPLEQKLISEEDLAANDILDYKDDDDKV
Purity	> 80% as determined by SDS-PAGE and Coomassie blue staining
Stability	Stable for 3 months from receipt of products under proper storage and handling conditions.

 Tel: 1-631-559-9269 1-516-512-3133

 Email: info@creative-biomart.com  Fax: 1-631-938-8127

 45-1 Ramsey Road, Shirley, NY 11967, USA

Storage	Store at -80 centigrade. Avoid repeated freeze-thaw cycles.
----------------	---

Concentration	50 µg/mL as determined by BCA
----------------------	-------------------------------

Storage Buffer	100 mM glycine, 25 mM Tris-HCl, pH 7.3.
-----------------------	---

GENE INFORMATION

Gene Name	BZW2 basic leucine zipper and W2 domains 2 [Homo sapiens (human)]
------------------	---

Official Symbol	BZW2
------------------------	------

Synonyms	BZW2; basic leucine zipper and W2 domains 2; basic leucine zipper and W2 domain-containing protein 2; HSPC028; MST017; MSTP017;
-----------------	---

Gene ID	28969
----------------	-------

mRNA Refseq	NM_014038
--------------------	-----------

Protein Refseq	NP_054757
-----------------------	-----------

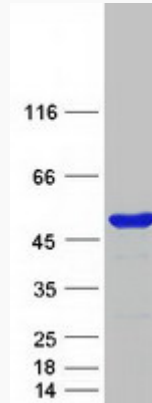
UniProt ID	Q9Y6E2
-------------------	--------

 Tel: 1-631-559-9269 1-516-512-3133

 Email: info@creative-biomart.com  Fax: 1-631-938-8127

 45-1 Ramsey Road, Shirley, NY 11967, USA

SDS-PAGE



 Tel: 1-631-559-9269 1-516-512-3133

 Email: info@creative-biomart.com  Fax: 1-631-938-8127

 45-1 Ramsey Road, Shirley, NY 11967, USA