

## Recombinant Mouse Bace1 protein, His & GST-tagged

**Cat. No.** Bace1-714M    **Lot. No.** (See product label)

### SPECIFICATION

<b>Product Overview</b>	Recombinant Mouse Bace1 aa. (Pro190~Ala430 (Accession # P56818)) fused with N-terminal His & GST tag was produced in E. coli cells.
<b>Species</b>	Mouse
<b>Source</b>	E.coli
<b>ProteinLength</b>	Pro190~Ala430
<b>Description</b>	This gene encodes a member of the peptidase A1 family of aspartic proteases. Alternative splicing results in multiple transcript variants, at least one of which encodes a preproprotein that is proteolytically processed to generate the mature protease. This transmembrane protease catalyzes the first step in the formation of amyloid beta peptide from amyloid precursor protein. Amyloid beta peptides are the main constituent of amyloid beta plaques, which accumulate in the brains of human Alzheimer's disease patients. Homozygous knockout mice for this gene exhibit a wide range of nervous system defects, growth retardation, metabolic abnormalities, and increased neonatal lethality.
<b>Form</b>	Freeze-dried powder
<b>Molecular Mass</b>	Predicted Molecular Mass: 59.0kDa
<b>Endotoxin</b>	<1.0EU per 1g (determined by the LAL method)

 Tel: 1-631-559-9269    1-516-512-3133

 Email: [info@creative-biomart.com](mailto:info@creative-biomart.com)     Fax: 1-631-938-8127

 45-1 Ramsey Road, Shirley, NY 11967, USA

<b>Purity</b>	>95%
<b>Characteristic</b>	The isoelectric point is 5.8.
<b>Applications</b>	SDS-PAGE; WB; ELISA; IP
<b>Stability</b>	The thermal stability is described by the loss rate. The loss rate was determined by accelerated thermal degradation test, that is, incubate the protein at 37°C for 48h, and no obvious degradation and precipitation were observed. The loss rate is less than 5% within the expiration date under appropriate storage condition.
<b>Storage</b>	Avoid repeated freeze/thaw cycles. Store at 2-8°C for one month. Aliquot and store at -80°C for 12 months.
<b>Storage buffer</b>	Supplied as lyophilized form in PBS, pH7.4, containing 5% trehalose, 0.01% sarcosyl.
<b>Reconstitution</b>	Reconstitute in sterile PBS, pH7.2-pH7.4.

## GENE INFORMATION

<b>Gene Name</b>	<a href="#">Bace1 beta-site APP cleaving enzyme 1 [ Mus musculus (house mouse) ]</a>
<b>Official Symbol</b>	<a href="#">Bace1</a>
<b>Synonyms</b>	Bace1; beta-site APP cleaving enzyme 1; ASP2; Bace; C76936; beta-secretase 1; APP beta-secretase; asp 2; aspartyl protease 2; beta-site amyloid precursor protein cleaving enzyme 1; memapsin-2; membrane-associated aspartic protease 2
<b>Gene ID</b>	<a href="#">23821</a>
<b>mRNA Refseq</b>	<a href="#">NM_001145947.2</a>

 Tel: 1-631-559-9269 1-516-512-3133

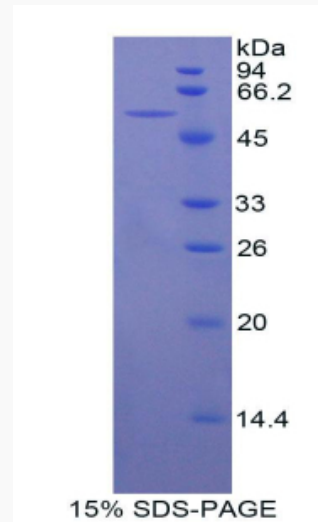
 Email: [info@creative-biomart.com](mailto:info@creative-biomart.com)  Fax: 1-631-938-8127

 45-1 Ramsey Road, Shirley, NY 11967, USA

**Protein Refseq** NP\_001139419.1

**UniProt ID** P56818

**SDS-PAGE**



 Tel: 1-631-559-9269 1-516-512-3133

 Email: [info@creative-biomart.com](mailto:info@creative-biomart.com)  Fax: 1-631-938-8127

 45-1 Ramsey Road, Shirley, NY 11967, USA