

Recombinant Mouse Bace2 protein, His & GST-tagged

Cat. No. Bace2-1832M Lot. No. (See product label)

SPECIFICATION

Product Overview	Recombinant Mouse Bace2 aa. (Glu156~Val407 (Accession # Q9JL18)) fused with N-terminal His & GST tag was produced in E. coli cells.
Species	Mouse
Source	E.coli
ProteinLength	Glu156~Val407
Description	This gene encodes a member of the peptidase A1 family of aspartic proteases. The encoded preproprotein undergoes proteolytic processing to generate an active endopeptidase enzyme. This transmembrane protease catalyzes the proteolysis of amyloid precursor protein to produce amyloid beta peptide. Mice lacking the encoded product exhibit increased pancreatic beta cell mass and improved glucose tolerance due to increased insulin secretion.
Form	Freeze-dried powder
Molecular Mass	Predicted Molecular Mass: 59.7kDa.
Endotoxin	<1.0EU per 1ug (determined by the LAL method)
Purity	>95%
Characteristic	The isoelectric point is 5.5.

 Tel: 1-631-559-9269 1-516-512-3133

 Email: info@creative-biomart.com  Fax: 1-631-938-8127

 45-1 Ramsey Road, Shirley, NY 11967, USA

Applications	SDS-PAGE; WB; ELISA; IP.
Stability	The thermal stability is described by the loss rate of the target protein. The loss rate was determined by accelerated thermal degradation test, that is, incubate the protein at 37°C for 48h, and no obvious degradation and precipitation were observed. (Referring from China Biological Products Standard, which was calculated by the Arrhenius equation.) The loss of this protein is less than 5% within the expiration date under appropriate storage condition.
Storage	Avoid repeated freeze/thaw cycles. Store at 2-8°C for one month. Aliquot and store at -80°C for 12 months.
Storage Buffer	Supplied as lyophilized form in PBS, pH7.4, containing 5% sucrose, 0.01% sarcosyl.
Reconstitution	Reconstitute in sterile PBS, pH7.2-pH7.4.

GENE INFORMATION

Gene Name	Bace2 beta-site APP-cleaving enzyme 2 [Mus musculus (house mouse)]
Official Symbol	Bace2
Synonyms	C1qa; complement component 1, q subcomponent, alpha polypeptide; C1q; AI255395; complement C1q subcomponent subunit A
Gene ID	56175
mRNA Refseq	NM_019517.5
Protein Refseq	NP_062390.3

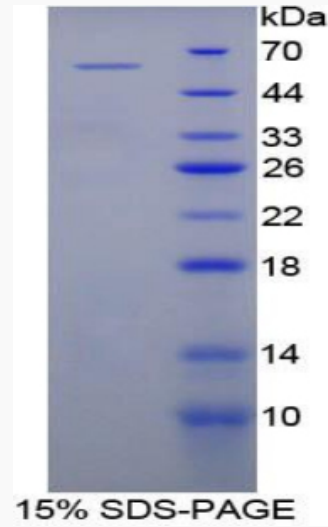
 Tel: 1-631-559-9269 1-516-512-3133

 Email: info@creative-biomart.com  Fax: 1-631-938-8127

 45-1 Ramsey Road, Shirley, NY 11967, USA

UniProt ID

Q9JL18



SDS-PAGE

 Tel: 1-631-559-9269 1-516-512-3133

 Email: info@creative-biomart.com  Fax: 1-631-938-8127

 45-1 Ramsey Road, Shirley, NY 11967, USA