

## Recombinant Human Bcl2 protein

Cat. No. Bcl2-2607H Lot. No. (See product label)

### SPECIFICATION

<b>Product Overview</b>	Active Recombinant Human Bcl-2 Protein is produced by E. coli expression system. The target protein is expressed with sequence (Ala2-Asp211) of human BCL2 (Accession #NP_000624.2) fused with no tags.
<b>Species</b>	Human
<b>Source</b>	E.coli
<b>ProteinLength</b>	Ala2-Asp211
<b>Form</b>	Lyophilized from a 0.22 µm filtered solution of PBS, pH 7.4.
<b>Molecular Mass</b>	25 kDa
<b>Endotoxin</b>	< 1.0 EU/µg of the protein by LAL method.
<b>Purity</b>	> 90% by SDS-PAGE.
<b>Storage</b>	Store the lyophilized protein at -20°C to -80 °C for long term. After reconstitution, the protein solution is stable at -20 °C for 3 months, at 2-8 °C for up to 1 week.
<b>Reconstitution</b>	Reconstitute to a concentration of 0.1-0.5 mg/mL in sterile distilled water.

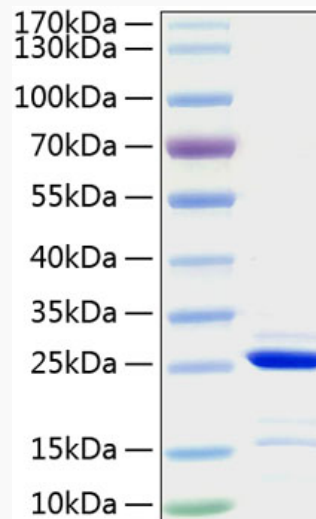
### GENE INFORMATION

 Tel: 1-631-559-9269 1-516-512-3133

 Email: [info@creative-biomart.com](mailto:info@creative-biomart.com)  Fax: 1-631-938-8127

 45-1 Ramsey Road, Shirley, NY 11967, USA

<b>Gene Name</b>	BCL2 B-cell CLL/lymphoma 2 [ Homo sapiens ]
<b>Official Symbol</b>	Bcl2
<b>Synonyms</b>	BCL2; B-cell CLL/lymphoma 2; apoptosis regulator Bcl-2; Bcl 2; PPP1R50; protein phosphatase 1; regulatory subunit 50; protein phosphatase 1, regulatory subunit 50; Bcl-2;
<b>Gene ID</b>	596
<b>mRNA Refseq</b>	NM_000633
<b>Protein Refseq</b>	NP_000624
<b>UniProt ID</b>	P10415

**SDS-PAGE**


Tel: 1-631-559-9269 1-516-512-3133

Email: [info@creative-biomart.com](mailto:info@creative-biomart.com) Fax: 1-631-938-8127

45-1 Ramsey Road, Shirley, NY 11967, USA