

Recombinant Rat Bcl2 Protein, His-tagged

Cat. No. Bcl2-304R **Lot. No.** (See product label)

SPECIFICATION

Product Overview	Recombinant Rat Bcl2 Protein (Ala2-Asp208) with N-His tag was expressed in E. coli.
Species	Rat
Source	E.coli
ProteinLength	Ala2-Asp208
Description	Enables BH domain binding activity. Involved in several processes, including response to peptide; response to purine-containing compound; and response to vitamin. Located in cytosol; mitochondrial crista; and perinuclear region of cytoplasm. Used to study several diseases, including brain ischemia (multiple); end stage renal disease; gastric ulcer; intestinal disease (multiple); and status epilepticus. Biomarker of several diseases, including abdominal obesity-metabolic syndrome 1; brain disease (multiple); hypertension (multiple); intrinsic cardiomyopathy (multiple); and neurodegenerative disease (multiple). Human ortholog(s) of this gene implicated in several diseases, including carcinoma (multiple); hematologic cancer (multiple); intracranial aneurysm; prostate cancer; and urinary bladder cancer. Orthologous to human BCL2 (BCL2 apoptosis regulator).
Form	Freeze-dried powder
Molecular Mass	Predicted Molecular Mass: 27.4 kDa
Purity	> 97%

 Tel: 1-631-559-9269 1-516-512-3133

 Email: info@creative-biomart.com  Fax: 1-631-938-8127

 45-1 Ramsey Road, Shirley, NY 11967, USA

Applications	Positive Control; Immunogen; SDS-PAGE; WB.
Stability	The thermal stability is described by the loss rate. The loss rate was determined by accelerated thermal degradation test, that is, incubate the protein at 37 centigrade for 48h, and no obvious degradation and precipitation were observed. The loss rate is less than 5% within the expiration date under appropriate storage condition.
Storage	Avoid repeated freeze/thaw cycles. Store at 2-8 centigrade for one month. Aliquot and store at -80 centigrade for 12 months.
Storage Buffer	PBS, pH7.4, containing 0.01% SKL, 1 mM DTT, 5% Trehalose and Proclin300.
Reconstitution	Reconstitute in sterile water to a concentration of 0.1-1.0 mg/mL. Do not vortex.

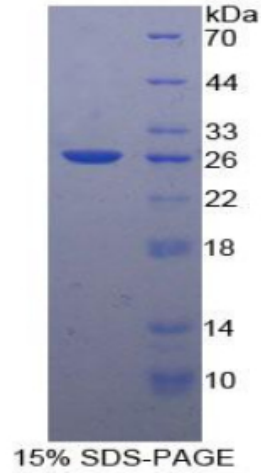
GENE INFORMATION

Gene Name	Bcl2 B-cell CLL/lymphoma 2 [<i>Rattus norvegicus</i> (Norway rat)]
Official Symbol	Bcl2
Synonyms	BCL2; B-cell CLL/lymphoma 2; apoptosis regulator Bcl-2; Bcl2-like protein; B-cell leukemia/lymphoma 2; B cell lymphoma 2 associated oncogene; Bcl-2
Gene ID	24224
mRNA Refseq	NM_016993
Protein Refseq	NP_058689
UniProt ID	P49950

 Tel: 1-631-559-9269 1-516-512-3133

 Email: info@creative-biomart.com  Fax: 1-631-938-8127

 45-1 Ramsey Road, Shirley, NY 11967, USA



Tel: 1-631-559-9269 1-516-512-3133

Email: info@creative-biomart.com Fax: 1-631-938-8127

45-1 Ramsey Road, Shirley, NY 11967, USA