

Recombinant Full Length Mouse Bcl2 Protein, His tagged

Cat. No. Bcl2-3582M Lot. No. (See product label)

SPECIFICATION

Product Overview	Recombinant Full Length Mouse Bcl2 Protein with His tag was expressed in E.coli.
Species	Mouse
Source	E.coli
ProteinLength	1-236 aa
Description	This gene encodes a member of the B cell lymphoma 2 protein family. Members of this family regulate cell death in multiple cell types and can have either proapoptotic or antiapoptotic activities. The protein encoded by this gene inhibits mitochondrial-mediated apoptosis. This protein is an integral outer mitochondrial membrane protein that functions as part of signaling pathway that controls mitochondrial permeability in response to apoptotic stimuli. This protein may also play a role in neuron cell survival and autophagy. Abnormal expression and chromosomal translocations of this gene are associated with cancer progression in numerous tissues. Alternate splicing results in multiple transcript variants.
Form	Sterile 20mM Tris, pH8.0, 200mM NaCl, 0.1%SKL
Molecular Mass	29 kDa
AASequence	MHHHHHHHHHHHHHDYKDDDDKMAQAGRTGYDNREIVMKYIHYKLSQRGYEWDA DADAAPLGAAPTGFISFQPESNPMPAVHRDMAARTSPLRPLVATAGPALSPVPPV VHLTLRRAGDDFSRRYRRDFAEMSSQLHLTPFTARGRFATVVEELFRDGVNWGRIV

 Tel: 1-631-559-9269 1-516-512-3133

 Email: info@creative-biomart.com  Fax: 1-631-938-8127

 45-1 Ramsey Road, Shirley, NY 11967, USA



AFFEFGGVMCVESVNREMSPLVDNIALWMTEYLNRLHTWIQDNGGWDAFVELYG
PSMRPLFDFSWLSLKTLLSLALVGACITLGAYLGHK

Purity >80% by SDS-PAGE

Storage Store it under sterile conditions at -20 to -80 centigrade. It is recommended that the protein be aliquoted for optimal storage. Avoid repeated freeze-thaw cycles.

Concentration 0.43 mg/mL by BCA

GENE INFORMATION

Gene Name Bcl2 B cell leukemia/lymphoma 2 [*Mus musculus*]

Official Symbol Bcl2

Synonyms BCL2; B cell leukemia/lymphoma 2; apoptosis regulator Bcl-2; B-cell leukemia/lymphoma 2; Bcl-2; AW986256; C430015F12Rik; D630044D05Rik; D830018M01Rik

Gene ID 12043

mRNA Refseq NM_009741

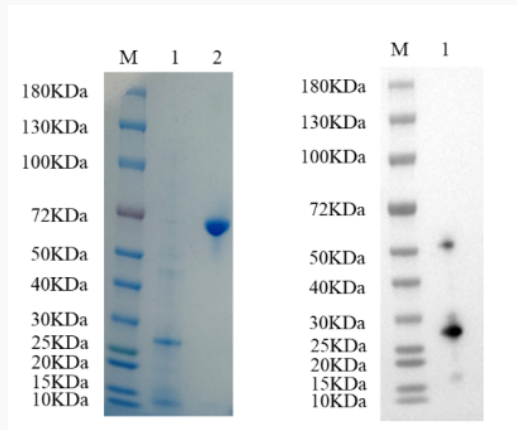
Protein Refseq NP_033871

Tel: 1-631-559-9269 1-516-512-3133

Email: info@creative-biomart.com Fax: 1-631-938-8127

45-1 Ramsey Road, Shirley, NY 11967, USA

SDS-PAGE and WB



Reducing 4%-20% SDS-PAGE (CBB stained) and WB (Anti-His Mouse Monoclonal antibody) analysis profiles of purified BCL2. 1. BCL2: 1 μ g 2. BSA: 1 μ g

 Tel: 1-631-559-9269 1-516-512-3133

 Email: info@creative-biomart.com  Fax: 1-631-938-8127

 45-1 Ramsey Road, Shirley, NY 11967, USA