

Recombinant Mouse Bcl2 protein

Cat. No. Bcl2-6743M **Lot. No.** (See product label)

SPECIFICATION

Product Overview	Recombinant Mouse Bcl2 protein(P10417)(5-205aa) was expressed in E.coli.
Species	Mouse
Source	E.coli
ProteinLength	5-205aa
Form	If the delivery form is liquid, the default storage buffer is Tris/PBS-based buffer, 5%-50% glycerol. If the delivery form is lyophilized powder, the buffer before lyophilization is Tris/PBS-based buffer, 6% Trehalose, pH 8.0.
Molecular Mass	22.8 kDa
Purity	Greater than 90% as determined by SDS-PAGE.
Storage	Store at -20°C/-80°C upon receipt, aliquoting is necessary for mutiple use. Avoid repeated freeze-thaw cycles.
Reconstitution	We recommend that this vial be briefly centrifuged prior to opening to bring the contents to the bottom. Please reconstitute protein in deionized sterile water to a concentration of 0.1-1.0 mg/mL. We recommend to add 5-50% of glycerol (final concentration) and aliquot for long-term storage at -20°C/-80°C.
AA Sequence	GRTGYDNREIVMKYIHYKLSQRGYEWDAGDADAAPLGAAPTPGIFSFQPESNPMPA

 Tel: 1-631-559-9269 1-516-512-3133

 Email: info@creative-biomart.com  Fax: 1-631-938-8127

 45-1 Ramsey Road, Shirley, NY 11967, USA

VHRDMAARTSPLRPLVATAGPALSPVPPVVHLTLRRAGDDFSRRYRRDFAEMSSQL
HLTPFTARGRFATVVEELFRDGVNWGRIVAFFEFGGVMCVESVNREMSPLVDNIAL
WMTEYLNRLHTWIQDNGGWDAFVELYGPSMRP

GENE INFORMATION

Gene Name Bcl2 B cell leukemia/lymphoma 2 [*Mus musculus*]

Official Symbol Bcl2

Synonyms BCL2; B cell leukemia/lymphoma 2; apoptosis regulator Bcl-2; B-cell leukemia/lymphoma 2; Bcl-2; AW986256; C430015F12Rik; D630044D05Rik; D830018M01Rik;

Gene ID 12043

mRNA Refseq NM_009741

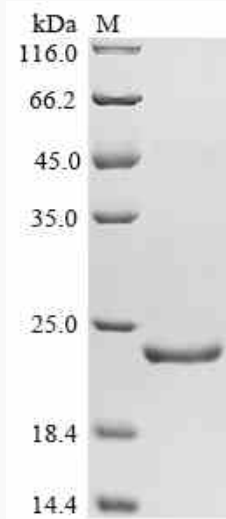
Protein Refseq NP_033871

 Tel: 1-631-559-9269 1-516-512-3133

 Email: info@creative-biomart.com  Fax: 1-631-938-8127

 45-1 Ramsey Road, Shirley, NY 11967, USA

SDS-PAGE



 Tel: 1-631-559-9269 1-516-512-3133

 Email: info@creative-biomart.com  Fax: 1-631-938-8127

 45-1 Ramsey Road, Shirley, NY 11967, USA