

## Recombinant Mouse BCL2-like 1 Protein, His tagged

Cat. No. Bcl2l1-202M    Lot. No. (See product label)

### SPECIFICATION

<b>Product Overview</b>	Recombinant mouse BCL2L1 protein (Q64373-1) (Met 1-Arg 209) with a His tag at the C-terminus was expressed in E. coli.
<b>Species</b>	Mouse
<b>Source</b>	E.coli
<b>ProteinLength</b>	1-209aa
<b>Description</b>	<p>Potent inhibitor of cell death. Inhibits activation of caspases. Appears to regulate cell death by blocking the voltage-dependent anion channel (VDAC) by binding to it and preventing the release of the caspase activator, CYC1, from the mitochondrial membrane. Also acts as a regulator of G2 checkpoint and progression to cytokinesis during mitosis. Isoform Bcl-X (L) also regulates presynaptic plasticity, including neurotransmitter release and recovery, number of axonal mitochondria as well as size and number of synaptic vesicle clusters. During synaptic stimulation, increases ATP availability from mitochondria through regulation of mitochondrial membrane ATP synthase F1F0 activity and regulates endocytic vesicle retrieval in hippocampal neurons through association with DMN1L and stimulation of its GTPase activity in synaptic vesicles. May attenuate inflammation impairing NLRP1-inflammasome activation, hence CASP1 activation and IL1B release.</p>
<b>Tag</b>	C-His
<b>Molecular Mass</b>	25.1 kDa

 Tel: 1-631-559-9269    1-516-512-3133

 Email: [info@creative-biomart.com](mailto:info@creative-biomart.com)     Fax: 1-631-938-8127

 45-1 Ramsey Road, Shirley, NY 11967, USA

<b>Endotoxin</b>	Less than 1.0 EU/μg by the LAL method.
<b>Purity</b>	>95% as determined by SDS-PAGE.
<b>Storage</b>	Please avoid repeated freeze-thaw cycles. Samples are stable for up to twelve months from date of receipt at -20 to -80 centigrade. It is recommended that aliquot the reconstituted solution to minimize freeze-thaw cycles.
<b>Storage Buffer</b>	Lyophilized from a 0.2 μm filtered solution of PBS, pH7.4, 5% Trehalose, 5% mannitol.
<b>Reconstitution</b>	Reconstitute at 250 μg/mL in sterile water.

## GENE INFORMATION

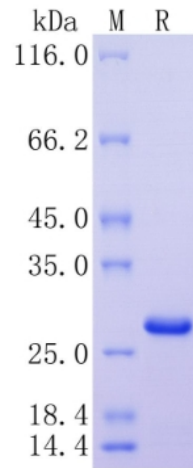
<b>Gene Name</b>	<a href="#">Bcl2l1</a> BCL2-like 1 [ <i>Mus musculus</i> (house mouse) ]
<b>Official Symbol</b>	<a href="#">Bcl2l1</a>
<b>Synonyms</b>	BCL2L1; BCL2-like 1; bcl-2-like protein 1; bcl2-L-1; apoptosis regulator Bcl-X; B-cell leukemia/lymphoma x; anti-apoptosis regulatory protein; BclX; Bcl2l; bcl-x; Bcl-XL; Bcl-Xs; Bcl(X)L; MGC99998; MGC113803;
<b>Gene ID</b>	<a href="#">12048</a>
<b>mRNA Refseq</b>	<a href="#">NM_009743</a>
<b>Protein Refseq</b>	<a href="#">NP_033873</a>
<b>UniProt ID</b>	<a href="#">Q64373</a>

 Tel: 1-631-559-9269 1-516-512-3133

 Email: [info@creative-biomart.com](mailto:info@creative-biomart.com)  Fax: 1-631-938-8127

 45-1 Ramsey Road, Shirley, NY 11967, USA

**Protein on SDS-  
PAGE under  
reducing (R)  
condition.**



 Tel: 1-631-559-9269 1-516-512-3133

 Email: [info@creative-biomart.com](mailto:info@creative-biomart.com)  Fax: 1-631-938-8127

 45-1 Ramsey Road, Shirley, NY 11967, USA