

## Recombinant Mouse Bcl2l1 protein

**Cat. No.** Bcl2l1-544M    **Lot. No.** (See product label)

### SPECIFICATION

<b>Product Overview</b>	Recombinant Mouse Bcl2l1 protein(Q64373)(2-212 aa) was expressed in E.coli.
<b>Species</b>	Mouse
<b>Source</b>	E.coli
<b>ProteinLength</b>	2-212 aa
<b>Form</b>	Lyophilized from a 0.2 µ filtered concentrated solution in 2 × PBS, pH 7.4, 5 % Trehalose.
<b>Molecular Mass</b>	Approximately 23.7 kDa, a single non-glycosylated polypeptide chain containing 211 amino acids.
<b>AASequence</b>	SQSNRELVVD FLSYKLSQKG YSWSQFSDVE ENRTEAPEET EAERETPSAI NGNPSWHLAD SPAVNGATGH SSSLDAREVI PMAAVKQALR EAGDEFELRY RRAFSDLTSQ LHITPGTAYQ SFEQVVNELF RDGVNWGRIV AFFSFGGALC VESVDKEMQV LVSRIASWMA TYLNDHLEPW IQENGGWDTF VDLYGNNAAA ESRKGQERFN R
<b>Endotoxin</b>	Less than 0.1 EU/g of rMuBcl-xL as determined by LAL method.
<b>Purity</b>	>97% by SDS-PAGE and HPLC analyses.
<b>Storage</b>	Use a manual defrost freezer and avoid repeated freeze-thaw cycles. - 12 months

 Tel: 1-631-559-9269    1-516-512-3133

 Email: [info@creative-biomart.com](mailto:info@creative-biomart.com)     Fax: 1-631-938-8127

 45-1 Ramsey Road, Shirley, NY 11967, USA

from date of receipt, -20 to -70 °C as supplied. - 1 month, 2 to 8 °C under sterile conditions after reconstitution. - 3 months, -20 to -70 °C under sterile conditions after reconstitution.

**Reconstitution**

We recommend that this vial be briefly centrifuged prior to opening to bring the contents to the bottom. Reconstitute in sterile distilled water or aqueous buffer containing 0.1 % BSA to a concentration of 0.1-1.0 mg/mL. Stock solutions should be apportioned into working aliquots and stored at ≤ -20 °C. Further dilutions should be made in appropriate buffered solutions.

**GENE INFORMATION**

**Gene Name** [Bcl2l1 BCL2-like 1 \[ Mus musculus \]](#)

**Official Symbol** [Bcl2l1](#)

**Synonyms** BCL2L1; BCL2-like 1; bcl-2-like protein 1; bcl2-L-1; apoptosis regulator Bcl-X; B-cell leukemia/lymphoma x; anti-apoptosis regulatory protein; BclX; Bcl2l; bcl-x; Bcl-XL; Bcl-Xs; Bcl(X)L; MGC99998; MGC113803;

**Gene ID** [12048](#)

**mRNA Refseq** [NM\\_009743](#)

**Protein Refseq** [NP\\_033873](#)

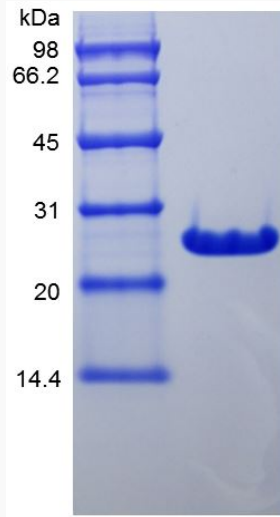
 Tel: 1-631-559-9269 1-516-512-3133

 Email: [info@creative-biomart.com](mailto:info@creative-biomart.com)  Fax: 1-631-938-8127

 45-1 Ramsey Road, Shirley, NY 11967, USA



SDS-PAGE



Tel: 1-631-559-9269 1-516-512-3133

Email: [info@creative-biomart.com](mailto:info@creative-biomart.com) Fax: 1-631-938-8127

45-1 Ramsey Road, Shirley, NY 11967, USA