

## Recombinant Guinea pig Bdnf protein, His & GST-tagged

Cat. No. Bdnf-548G Lot. No. (See product label)

### SPECIFICATION

<b>Product Overview</b>	Recombinant Guinea pig Bdnf aa. (Ser147~Leu249) fused with N-terminal His & GST tag was produced in E. coli cells.
<b>Species</b>	Guinea pig
<b>Source</b>	E.coli
<b>ProteinLength</b>	Ser147~Leu249
<b>Form</b>	Freeze-dried powder
<b>Molecular Mass</b>	Predicted Molecular Mass: 44.1kDa
<b>Endotoxin</b>	<1.0EU per 1g (determined by the LAL method)
<b>Purity</b>	> 95%
<b>Characteristic</b>	The isoelectric point is 8.2.
<b>Applications</b>	SDS-PAGE; WB; ELISA; IP.
<b>Stability</b>	The thermal stability is described by the loss rate. The loss rate was determined by accelerated thermal degradation test, that is, incubate the protein at 37°C for 48h, and no obvious degradation and precipitation were observed. The loss rate is less than 5% within the expiration date under appropriate storage condition.

 Tel: 1-631-559-9269 1-516-512-3133

 Email: [info@creative-biomart.com](mailto:info@creative-biomart.com)  Fax: 1-631-938-8127

 45-1 Ramsey Road, Shirley, NY 11967, USA

<b>Storage</b>	Avoid repeated freeze/thaw cycles. Store at 2-8°C for one month. Aliquot and store at -80°C for 12 months.
----------------	--

<b>Storage buffer</b>	20mM Tris, 150mM NaCl, pH8.0, containing 1mM EDTA, 1mM DTT, 0.01% sarcosyl, 5% trehalose, and preservative.
-----------------------	---

<b>Reconstitution</b>	Reconstitute in sterile ddH <sub>2</sub> O.
-----------------------	---

## GENE INFORMATION

<b>Gene Name</b>	<a href="#">Bdnf brain derived neurotrophic factor [ <i>Cavia porcellus</i> (domestic guinea pig) ]</a>
------------------	---

<b>Official Symbol</b>	<a href="#">Bdnf</a>
------------------------	----------------------

<b>Synonyms</b>	Bdnf; brain derived neurotrophic factor
-----------------	---

<b>Gene ID</b>	<a href="#">100730257</a>
----------------	---------------------------

<b>mRNA Refseq</b>	<a href="#">XM_013147262.1</a>
--------------------	--------------------------------

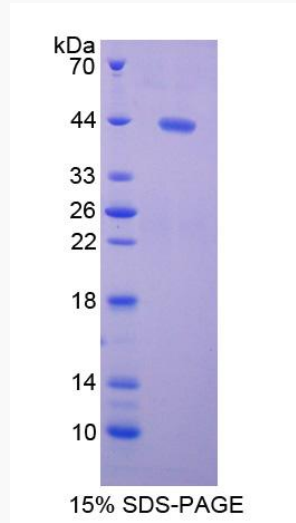
<b>Protein Refseq</b>	<a href="#">XP_013002716.1</a>
-----------------------	--------------------------------

 Tel: 1-631-559-9269 1-516-512-3133

 Email: [info@creative-biomart.com](mailto:info@creative-biomart.com)  Fax: 1-631-938-8127

 45-1 Ramsey Road, Shirley, NY 11967, USA

**SDS-PAGE**



 Tel: 1-631-559-9269 1-516-512-3133

 Email: [info@creative-biomart.com](mailto:info@creative-biomart.com)  Fax: 1-631-938-8127

 45-1 Ramsey Road, Shirley, NY 11967, USA