

Active Recombinant Mouse Bdnf protein

Cat. No. Bdnf-736M **Lot. No.** (See product label)

SPECIFICATION

Product Overview	Active Recombinant Mouse Bdnf protein(Q8CC36)(25-178 aa) was expressed in E.coli.
Species	Mouse
Source	E.coli
ProteinLength	25-178 aa
Form	Lyophilized from a 0.2 µ filtered concentrated solution in PBS, pH 7.4.
Bio-activity	Fully biologically active when compared to standard. It is able to enhance neurite outgrowth of E16-E18 rat embryonic cortical neurons when immobilized at 5 - 30 µg/mL on a nitrocellulose-coated microplate.
Molecular Mass	Approximately 18.5 kDa, a single non-glycosylated polypeptide chain containing 163 amino acids.
AASequence	QGLEAGVGPR ADCEVCKEFL DRFYNSLLSR GIDFSADTIE KELLNFCSDA KGKENRLCYY LGATTTDAATK ILGEVTRPMS VHIPAVKICE KLKKMDSQIC ELKYGKKLDL ASVDLWKMRV AELKQILQRW GEECRACA EK SDYVNLIREL APKYVEIYPQ TEL
Endotoxin	Less than 0.1 EU/g of rMuCDNF as determined by LAL method.

 Tel: 1-631-559-9269 1-516-512-3133

 Email: info@creative-biomart.com  Fax: 1-631-938-8127

 45-1 Ramsey Road, Shirley, NY 11967, USA

Purity	>97% by SDS-PAGE and HPLC analyses.
Storage	Use a manual defrost freezer and avoid repeated freeze-thaw cycles. - 12 months from date of receipt, -20 to -70 °C as supplied. - 1 month, 2 to 8 °C under sterile conditions after reconstitution. - 3 months, -20 to -70 °C under sterile conditions after reconstitution.
Reconstitution	We recommend that this vial be briefly centrifuged prior to opening to bring the contents to the bottom. Reconstitute in sterile distilled water or aqueous buffer containing 0.1 % BSA to a concentration of 0.1-1.0 mg/mL. Stock solutions should be apportioned into working aliquots and stored at ≤ -20 °C. Further dilutions should be made in appropriate buffered solutions.

GENE INFORMATION

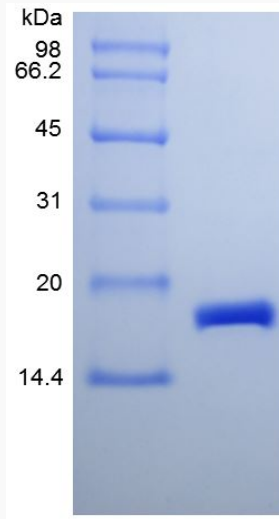
Gene Name	Bdnf brain derived neurotrophic factor [Mus musculus]
Official Symbol	Bdnf
Synonyms	BDNF; brain derived neurotrophic factor; brain-derived neurotrophic factor; anorexia BDNF;
Gene ID	12064
mRNA Refseq	NM_001048139
Protein Refseq	NP_001041604

 Tel: 1-631-559-9269 1-516-512-3133

 Email: info@creative-biomart.com  Fax: 1-631-938-8127

 45-1 Ramsey Road, Shirley, NY 11967, USA

SDS-PAGE



 Tel: 1-631-559-9269 1-516-512-3133

 Email: info@creative-biomart.com  Fax: 1-631-938-8127

 45-1 Ramsey Road, Shirley, NY 11967, USA