

Recombinant Mouse Bgn protein, His-tagged

Cat. No. Bgn-1639M **Lot. No.** (See product label)

SPECIFICATION

Product Overview	Recombinant Mouse Bgn aa. (Leu53~Arg166 (Accession # P28653)) fused with N-terminal His tag was produced in E. coli cells.
Species	Mouse
Source	E.coli
ProteinLength	Leu53~Arg166
Description	This gene encodes a small, leucine-rich repeat proteoglycan that plays important roles in bone mineralization and connective tissue metabolism. The encoded preproprotein undergoes post-translational processing during which chondroitin sulfate or dermatan sulfate chains are attached before incorporation into the extracellular matrix. Mice lacking the encoded protein exhibit reduced growth rate and acquire diminished bone mass progressively with age.
Form	Freeze-dried powder
Molecular Mass	Predicted Molecular Mass: 14.4kDa
Endotoxin	<1.0EU per 1ug (determined by the LAL method)
Purity	>95%
Applications	SDS-PAGE; WB; ELISA; IP.

 Tel: 1-631-559-9269 1-516-512-3133

 Email: info@creative-biomart.com  Fax: 1-631-938-8127

 45-1 Ramsey Road, Shirley, NY 11967, USA

Stability	The thermal stability is described by the loss rate. The loss rate was determined by accelerated thermal degradation test, that is, incubate the protein at 37°C for 48h, and no obvious degradation and precipitation were observed. The loss rate is less than 5% within the expiration date under appropriate storage condition.
Storage	Avoid repeated freeze/thaw cycles. Store at 2-8°C for one month. Aliquot and store at -80°C for 12 months.
Storage buffer	Supplied as lyophilized form in PBS, pH7.4, containing 5% sucrose, 0.01% sarcosyl.
Reconstitution	Reconstitute in sterile PBS, pH7.2-pH7.4.
Isoelectric Point	7.8

GENE INFORMATION

Gene Name	Bgn biglycan [<i>Mus musculus</i> (house mouse)]
Official Symbol	Bgn
Synonyms	Bgn; biglycan; BG; PGI; DSPG1; PG-S1; SLRR1A; bone/cartilage proteoglycan I
Gene ID	12111
mRNA Refseq	NM_007542.5
Protein Refseq	NP_031568.2
UniProt ID	P28653

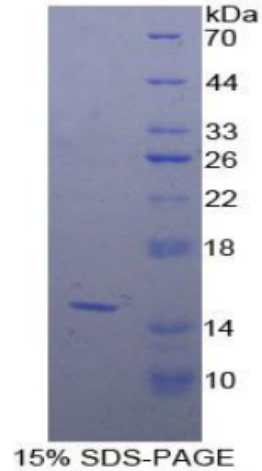
 Tel: 1-631-559-9269 1-516-512-3133

 Email: info@creative-biomart.com  Fax: 1-631-938-8127

 45-1 Ramsey Road, Shirley, NY 11967, USA



SDS-PAGE



Tel: 1-631-559-9269 1-516-512-3133

Email: info@creative-biomart.com Fax: 1-631-938-8127

45-1 Ramsey Road, Shirley, NY 11967, USA