

Post natal Rat brain Whole Cell Lysate

Cat. No. Brain-082RCL **Lot. No.** (See product label)

SPECIFICATION

Product Overview Multi-purpose Whole Cell Lysates are derived from tissues and cell lines using highly refined extraction protocols to ensure exceptionally high quality, protein integrity and lot-to-lot reproducibility. All extracts are tested by SDS-PAGE using 4-20% gradient gels.

Species Rat

Form Liquid (sterile filtered)

Specificity Tissues were washed exhaustively with PBS to remove blood and other debris. A lysate was prepared by homogenizing the tissue and washing the cells in cold PBS. Washed cells were incubated at 4 centigrade in modified RIPA buffer to lyse the cells. Protein integrity is ensured using a cocktail of protease inhibitors with broad specificity for the inhibition of aspartic, cysteine, and serine proteases as well as aminopeptidases (0.1 mM AEBSF HCl, 0.08 μ M Aprotinin, 5 μ M Bestatin, 1.5 μ M E-64, 2 μ M Leupeptin Hemisulfate and 1 μ M Pepstatin A). The following phosphatase inhibitors were also added: 1 mM NaF and 1 mM Na₃VO₄. Cell debris was removed by centrifugation and membrane filtration. Protein concentration was determined by Lowry assay using a commercially available kit. The protein concentration was adjusted to 1 mg/mL using RIPA buffer.

Applications SDS-PAGE

Cell Line Primary tissue

 Tel: 1-631-559-9269 1-516-512-3133

 Email: info@creative-biomart.com  Fax: 1-631-938-8127

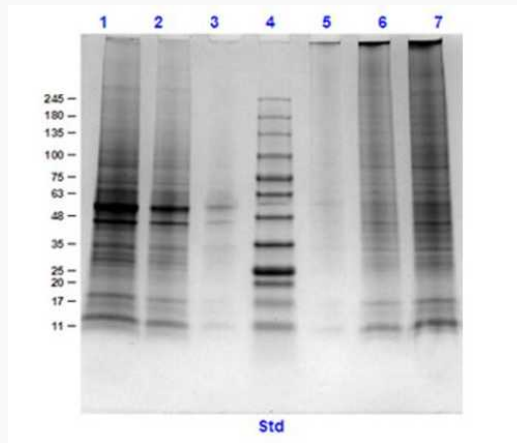
 45-1 Ramsey Road, Shirley, NY 11967, USA

Lysate Fractionation	Whole Cell Lysate
Lysate Stimulation	Not Stimulated
Culture Type	Primary Tissue
Induction	None (Control)
Concentration	1.0 mg/mL by BCA assay
Buffer	1x RIPA Buffer with HALT Protease and Phosphatase Inhibitors
Preservative	None
Stabilizer	None
Shipping	Dry Ice
Storage	Store vial at -70 centigrade or COLDER. For extended storage, aliquot contents to minimize freeze/thaw cycles.
Expiration	Expiration date is three months from date of receipt.

 Tel: 1-631-559-9269 1-516-512-3133

 Email: info@creative-biomart.com  Fax: 1-631-938-8127

 45-1 Ramsey Road, Shirley, NY 11967, USA

**SDS-PAGE**

SDS-PAGE of Rat Brain, post natal, Whole Cell Lysate.

Lane 1: Rat Brain, Post Natal, WCL (10 µg) Reduced.

Lane 2: Rat Brain, Post Natal, WCL (5 µg) Reduced.

Lane 3: Rat Brain, Post Natal, WCL (1 µg) Reduced.

Lane 4: Opal pre-stained Molecular Weight Markers.

Lane 5: Rat Brain, Post Natal, WCL (1 µg) Non-Reduced.

Lane 6: Rat Brain, Post Natal, WCL (5 µg) Non-Reduced.

Lane 7: Rat Brain, Post Natal, WCL (10 µg) Non-Reduced.

Coomassie Blue stained.

Observed and Expected MW: Various bands between ~11-245 kDa.

 Tel: 1-631-559-9269 1-516-512-3133

 Email: info@creative-biomart.com  Fax: 1-631-938-8127

 45-1 Ramsey Road, Shirley, NY 11967, USA