

Recombinant Mouse Btc protein

Cat. No. Btc-566M Lot. No. (See product label)

SPECIFICATION

| | |
|-------------------------|--|
| Product Overview | Recombinant Mouse Btc protein was expressed in Escherichia coli. |
| Species | Mouse |
| Source | E.coli |
| ProteinLength | 80 |
| Description | Betacellulin (BTC) encoded by the BTC gene located on the chromosome 4, is a member of the EGF family of cytokines that also includes EGF, TGF-alpha, Amphiregulin, HB-EGF, Epiregulin, Tomoregulin and the Neuregulins. BTC is expressed in most tissues including kidney, uterus, liver and pancreas. It is also present in body fluids, including serum, milk, and colostrum. Mouse BTC is expressed as a 178-amino acid precursor and the amino acid sequence of the mature form is 80% identical with human BTC. Both human and mouse BTC exhibit significant overall similarity with other members of the EGF family. Recombinant murine beta-cellulin is a heparinbinding protein containing 80 amino acids residues. |
| Form | Lyophilized from a 0.2µm filtered concentrated solution in 2 × PBS, pH 7.4. |
| Bio-activity | Fully biologically active when compared to standard. The ED50 as determined by a cell proliferation assay using murine Balb/c 3T3 cells is less than 0.01 ng/ml, corresponding to a specific activity of > 1.0 × 10 ⁸ IU/mg. |
| Molecular Mass | Recombinant human Betacellulin is a 9.0 kDa monomeric protein, containing 80 |

 Tel: 1-631-559-9269 1-516-512-3133

 Email: info@creative-biomart.com  Fax: 1-631-938-8127

 45-1 Ramsey Road, Shirley, NY 11967, USA

| | |
|-----------------------|---|
| | amino residues, which comprises the mature EGF homologous portion of the Betacellulin protein. |
| AA Sequence | DGNTTRTPETNGSLCGAPGENCTGTTTPRQKVKTHFSRCPKQYKHYCIHGRCRFVV DEQTPSCICEKGYFGARCERVDLFY |
| Endotoxin | Less than 1 EU/g of rMuBetacellulin as determined by LAL method. |
| Purity | >96% by SDS-PAGE and HPLC analysis. |
| Storage | Use a manual defrost freezer and avoid repeated freeze-thaw cycles. 12 months from date of receipt, -20 to -70 centigrade as supplied. 1 month, 2 to 8 centigrade under sterile conditions after reconstitution. 3 months, -20 to -70 centigrade under sterile conditions after reconstitution. |
| Reconstitution | We recommend that this vial be briefly centrifuged prior to opening to bring the contents to the bottom. Reconstitute in sterile distilled water or aqueous buffer containing 0.1 % BSA to a concentration of 0.1-1.0 mg/mL. Stock solutions should be apportioned into working aliquots and stored at ≤-20 centigrade. Further dilutions should be made in appropriate buffered solutions. |

GENE INFORMATION

| | |
|------------------------|---|
| Gene Name | Btc |
| Official Symbol | Btc |
| Synonyms | BTC; betacellulin, epidermal growth factor family member; betacellulin; probetacellulin; Bcn; |
| Gene ID | 12223 |

 Tel: 1-631-559-9269 1-516-512-3133

 Email: info@creative-biomart.com  Fax: 1-631-938-8127

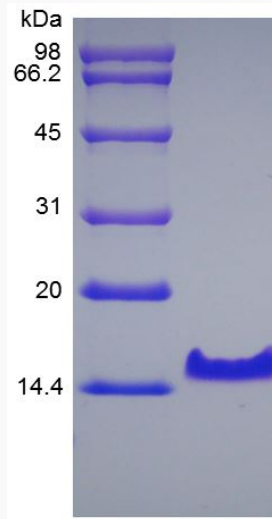
 45-1 Ramsey Road, Shirley, NY 11967, USA


mRNA Refseq [NM_007568](#)

Protein Refseq [NP_031594](#)


UniProt ID [Q05928](#)

SDS-PAGE of Btc-566M



 Tel: 1-631-559-9269 1-516-512-3133

 Email: info@creative-biomart.com  Fax: 1-631-938-8127

 45-1 Ramsey Road, Shirley, NY 11967, USA