

Recombinant Mouse Btla protein, His-tagged

Cat. No. Btla-5733M Lot. No. (See product label)

SPECIFICATION

Product Overview	Recombinant Mouse Btla protein(Q32MV9)(Glu30-Gly176), fused with C-terminal His tag, was expressed in HEK293.
Species	Mouse
Source	HEK293
ProteinLength	Glu30-Gly176
Tag	C-His
Form	Lyophilized from 0.22µm filtered solution in PBS (pH 7.4). Normally 5% trehalose is added as protectant before lyophilization.
Molecular Mass	The protein has a predicted MW of 17.8 kDa. Due to glycosylation, the protein migrates to 35-50 kDa based on Tris-Bis PAGE result.
Endotoxin	Less than 1EU per µg by the LAL method.
Purity	> 95% as determined by Tris-Bis PAGE; > 95% as determined by HPLC
Storage	Reconstituted protein stable at -80°C for 12 months, 4°C for 1 week. Use a manual defrost freezer and avoid repeated freeze-thaw cycles.
Reconstitution	Centrifuge tubes before opening. Reconstituting to a concentration more than 100

 Tel: 1-631-559-9269 1-516-512-3133

 Email: info@creative-biomart.com  Fax: 1-631-938-8127

 45-1 Ramsey Road, Shirley, NY 11967, USA

µg/ml is recommended. Dissolve the lyophilized protein in distilled water.

GENE INFORMATION

Gene Name Btla B and T lymphocyte associated [*Mus musculus*]

Official Symbol Btla

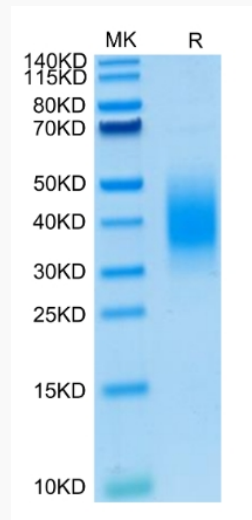
Synonyms BTLA; B and T lymphocyte associated; B- and T-lymphocyte attenuator; B and T lymphocyte attenuator; B- and T-lymphocyte-associated protein; A630002H24; MGC124217; MGC124218;

Gene ID 208154

mRNA Refseq NM_001037719

Protein Refseq NP_001032808

Tris-Bis PAGE



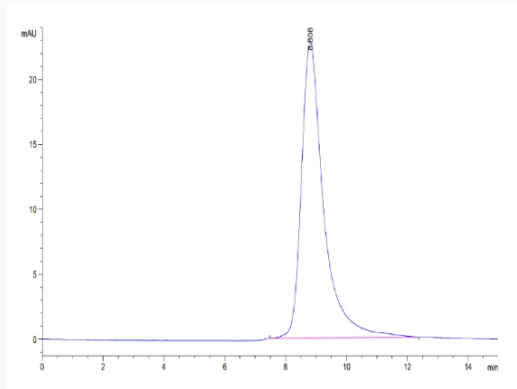
Tel: 1-631-559-9269 1-516-512-3133

Email: info@creative-biomart.com Fax: 1-631-938-8127

45-1 Ramsey Road, Shirley, NY 11967, USA



SEC-HPLC



Tel: 1-631-559-9269 1-516-512-3133

Email: info@creative-biomart.com Fax: 1-631-938-8127

45-1 Ramsey Road, Shirley, NY 11967, USA