

Recombinant Human C10orf46 Protein, GST-tagged

Cat. No. C10orf46-430H **Lot. No.** (See product label)

SPECIFICATION

Product Overview	Human C10orf46 full-length ORF (AAH38294.1, 1 a.a. - 303 a.a.) recombinant protein with GST-tag at N-terminal.
Species	Human
Source	Wheat Germ
Form	50 mM Tris-HCl, 10 mM reduced Glutathione, pH=8.0 in the elution buffer.
Molecular Mass	60 kDa
AA Sequence	MEESMEEEEGGSYEAMMDDQNHNWEEAVDGFQRQLPPPPPPSSIPAPAREPPG GQLLAVPAVSVDRKGPKEGLPMGPQPPEANGVIMMLKSCDAAA AVAKAAPAPTAS STININTSTSKFLMNVITIEDYKSTYWPKLDGAIDQLLTQSPGDYIPISYEQIYSCVYKC VCQQHSEQMYSDLIKKITNHLERVSKELQASPPDLIERFNIALGQYMGALQSIVPLFI YMNKFYIETKLNRLKDDLIKLFTEHVAEKHIYSLMPLLEAQSTPFQVTPSTMANIVK GLYTLRPVSNFTAV
Quality Control Test	12.5% SDS-PAGE Stained with Coomassie Blue.
Storage	Store at -80 centigrade. Aliquot to avoid repeated freezing and thawing.
Storage Buffer	50 mM Tris-HCl, 10 mM reduced Glutathione, pH=8.0 in the elution buffer.

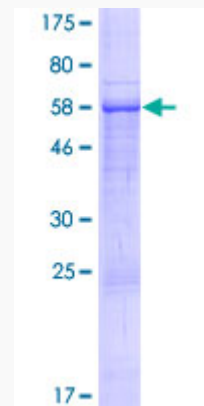
GENE INFORMATION

 Tel: 1-631-559-9269 1-516-512-3133

 Email: info@creative-biomart.com  Fax: 1-631-938-8127

 45-1 Ramsey Road, Shirley, NY 11967, USA

Gene Name	C10orf46 chromosome 10 open reading frame 46 [Homo sapiens]
Official Symbol	C10orf46
Synonyms	C10ORF46; chromosome 10 open reading frame 46; uncharacterized protein C10orf46; FLJ40409; MGC33215; cullin;
Gene ID	143384
mRNA Refseq	NM_153810
Protein Refseq	NP_722517
UniProt ID	Q86Y37



 Tel: 1-631-559-9269 1-516-512-3133

 Email: info@creative-biomart.com  Fax: 1-631-938-8127

 45-1 Ramsey Road, Shirley, NY 11967, USA