

Recombinant Human C10orf88 Protein, Myc/DDK-tagged, C13 and N15-labeled

Cat. No. C10orf88-3844H **Lot. No.** (See product label)

SPECIFICATION

Product Overview C10orf88 MS Standard C13 and N15-labeled recombinant protein (NP_079218) with a C-terminal MYC/DDK tag, was expressed in HEK293 cells.

Species Human

Source HEK293

Description C10orf88 (Chromosome 10 Open Reading Frame 88) is a Protein Coding gene. Diseases associated with C10orf88 include Beare-Stevenson Cutis Gyrata Syndrome. Gene Ontology (GO) annotations related to this gene include identical protein binding.

Molecular Mass 49.2 kDa

AA Sequence

```

METRTEDGGLTRRPTLASSWDVAGGALTHSLLLTRAGLGP GDFDWEELLAPPAG
QDLVILKRNHNNKDENPCFLYLRCGPDGGEEIASIGILSSARNMEVYLGE EYCGTSR
GKNVCTVLDDSEHEKIILYKKNLKLESSTHACKIKLLSFGERQCVFISKVVVHMRSVFA
NSSTSSPALGSRIDLDKVQTIMESMGSKLSPGAQQLMDMVR CQQRNCIPIGEQLQS
VLGNSGYKHMIGLQSSSTLGLTLNKSSSTPPFPRTGLTSGNV TENLQTYIDKSTQLPG
GENSTKLDECKVMPQNH SFLENDLKNAMASFLPKKVSDNSNIPNSELLPFLQNLCS
QVNHLHVGNKTECQENITKHGERILGVGMEEQSICSYLEKILSKNMELMEKKLMDYI
DQRIHELQEHI DDKIALLLDLLQNPNSPPTGIPLRHYDSGERLSNGERTRTRPLEQKLI
SEEDLAANDILDYKDDDDKV
    
```

 Tel: 1-631-559-9269 1-516-512-3133

 Email: info@creative-biomart.com  Fax: 1-631-938-8127

 45-1 Ramsey Road, Shirley, NY 11967, USA

Purity	> 80% as determined by SDS-PAGE and Coomassie blue staining
Stability	Stable for 3 months from receipt of products under proper storage and handling conditions.
Storage	Store at -80 centigrade. Avoid repeated freeze-thaw cycles.
Concentration	50 µg/mL as determined by BCA
Storage Buffer	100 mM glycine, 25 mM Tris-HCl, pH 7.3.

GENE INFORMATION

Gene Name	C10orf88 chromosome 10 open reading frame 88 [Homo sapiens (human)]
Official Symbol	C10orf88
Synonyms	C10ORF88; chromosome 10 open reading frame 88; uncharacterized protein C10orf88; Em:AC073585.5; FLJ13490;
Gene ID	80007
mRNA Refseq	NM_024942
Protein Refseq	NP_079218
UniProt ID	Q9H8K7

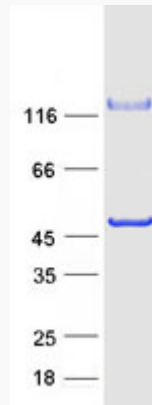
 Tel: 1-631-559-9269 1-516-512-3133

 Email: info@creative-biomart.com  Fax: 1-631-938-8127

 45-1 Ramsey Road, Shirley, NY 11967, USA



SDS-PAGE



Tel: 1-631-559-9269 1-516-512-3133

Email: info@creative-biomart.com Fax: 1-631-938-8127

45-1 Ramsey Road, Shirley, NY 11967, USA