

## Recombinant Human C10orf88 Protein, GST-tagged

Cat. No. C10orf88-448H Lot. No. (See product label)

### SPECIFICATION

**Product Overview** Human C10orf88 full-length ORF ( AAH32645.1, 1 a.a. - 445 a.a.) recombinant protein with GST-tag at N-terminal.

**Species** Human

**Source** Wheat Germ

**Form** 50 mM Tris-HCl, 10 mM reduced Glutathione, pH=8.0 in the elution buffer.

**Molecular Mass** 75.6 kDa

**AA Sequence**

METRTEDGGLTRRPTLASSWDVAGGALTHSLLLTRAGLGP GDFDWEELLAPPAG  
QDLVILKRHNHNKNDENPCFLYLRCGPDGGEEIASIGILSSARNMEVYLGEEYCGTSR  
GKNVCTVLDDSEHEKIILYKKNLKLESSTHACKIKLLSFGERQCVFISKVVVHMRSVFA  
NSSTSSPALGSRIDLKQVQTIMESMGSKLSPGAQQLMDMVR CQQRNCIPIGEQLQS  
VLGNSGYKHMIGLQSSSTLGLTLNKSSSTPPFPRTGLTSGNV TENLQTYIDKSTQLPG  
GENSTKLDECKVMPQNH SFLNDLKNAMASFLPKK VSDNSNIPNSELLPFLQNLCS  
QVNHLHVGNKTECQENITKHGERILGVGMEEQSICSYLEKILSKNMELMEKKLMDYI  
DQRIHELQEHIDDKIALLLDLLQNPNSPPTGIPLRHYDSGERLSNGER

**Storage** Store at -80 centigrade. Aliquot to avoid repeated freezing and thawing.

**Storage Buffer** 50 mM Tris-HCl, 10 mM reduced Glutathione, pH=8.0 in the elution buffer.

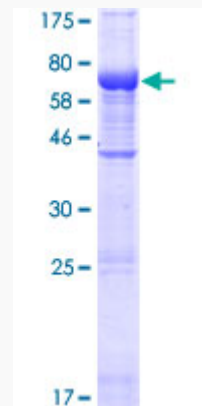
### GENE INFORMATION

 Tel: 1-631-559-9269 1-516-512-3133

 Email: [info@creative-biomart.com](mailto:info@creative-biomart.com)  Fax: 1-631-938-8127

 45-1 Ramsey Road, Shirley, NY 11967, USA

<b>Gene Name</b>	C10orf88 chromosome 10 open reading frame 88 [ Homo sapiens ]
<b>Official Symbol</b>	C10orf88
<b>Synonyms</b>	C10ORF88; chromosome 10 open reading frame 88; uncharacterized protein C10orf88; Em:AC073585.5; FLJ13490;
<b>Gene ID</b>	80007
<b>mRNA Refseq</b>	NM_024942
<b>Protein Refseq</b>	NP_079218
<b>UniProt ID</b>	Q9H8K7



 Tel: 1-631-559-9269 1-516-512-3133

 Email: [info@creative-biomart.com](mailto:info@creative-biomart.com)  Fax: 1-631-938-8127

 45-1 Ramsey Road, Shirley, NY 11967, USA