

## Recombinant Human C10orf91 Protein, GST-tagged

**Cat. No.** C10orf91-451H    **Lot. No.** (See product label)

### SPECIFICATION

<b>Product Overview</b>	Human C10orf91 full-length ORF (NP_775812.1, 1 a.a. - 145 a.a.) recombinant protein with GST tag at N-terminal.
<b>Species</b>	Human
<b>Source</b>	Wheat Germ
<b>Form</b>	50 mM Tris-HCl, 10 mM reduced Glutathione, pH=8.0 in the elution buffer.
<b>Molecular Mass</b>	41.8 kDa
<b>AA Sequence</b>	MWSFLPGAESVSMGPVPGVSSLGACWTHDQDSGRAEDRPQAPRITQYTWVLSFLF TEKPQTRSTSPISHQGQPQTTRALSLRQPQHPSAPASGRPRPPHSSGPDLAEEAPV VDQASQAAGRASSGLGLWEQASVSQGFRNAAFEA
<b>Storage</b>	Store at -80 centigrade. Aliquot to avoid repeated freezing and thawing.
<b>Storage Buffer</b>	50 mM Tris-HCl, 10 mM reduced Glutathione, pH=8.0 in the elution buffer.

### GENE INFORMATION

<b>Gene Name</b>	C10orf91 chromosome 10 open reading frame 91 [ Homo sapiens ]
<b>Official Symbol</b>	C10orf91

 Tel: 1-631-559-9269    1-516-512-3133

 Email: [info@creative-biomart.com](mailto:info@creative-biomart.com)     Fax: 1-631-938-8127

 45-1 Ramsey Road, Shirley, NY 11967, USA

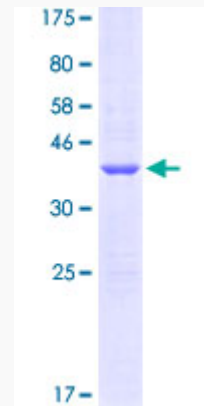
**Synonyms** bA432J24.4; RP11-432J24.4

**Gene ID** 170393

**mRNA Refseq** NM\_173541.2

**Protein Refseq** NP\_775812.1

**UniProt ID** Q5T1B1



Tel: 1-631-559-9269 1-516-512-3133

Email: [info@creative-biomart.com](mailto:info@creative-biomart.com) Fax: 1-631-938-8127

45-1 Ramsey Road, Shirley, NY 11967, USA