

## Recombinant Human C11orf1 Protein, GST-tagged

Cat. No. C11orf1-456H Lot. No. (See product label)

### SPECIFICATION

<b>Product Overview</b>	Human C11orf1 full-length ORF ( NP_073598.1, 1 a.a. - 150 a.a.) recombinant protein with GST-tag at N-terminal.
<b>Species</b>	Human
<b>Source</b>	Wheat Germ
<b>Form</b>	50 mM Tris-HCl, 10 mM reduced Glutathione, pH=8.0 in the elution buffer.
<b>Molecular Mass</b>	44.2 kDa
<b>AA Sequence</b>	MAASQCLCCSKFLFQRQNLACFLTNPCHGSLVNADGHGEVWTDWNNMSKFFQYG WRCTTNTENTYSNRTLGMNWNQERYDLRNIVQPKPLPSQFGHYFETTYDTSYNNKM PLSTHRFKREPHWFPGHQPELDPPRYKCTEKSTYMNSYSKP
<b>Storage</b>	Store at -80 centigrade. Aliquot to avoid repeated freezing and thawing.
<b>Storage Buffer</b>	50 mM Tris-HCl, 10 mM reduced Glutathione, pH=8.0 in the elution buffer.

### GENE INFORMATION

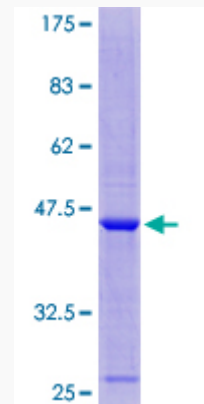
<b>Gene Name</b>	C11orf1 chromosome 11 open reading frame 1 [ Homo sapiens ]
<b>Official Symbol</b>	C11orf1

 Tel: 1-631-559-9269 1-516-512-3133

 Email: [info@creative-biomart.com](mailto:info@creative-biomart.com)  Fax: 1-631-938-8127

 45-1 Ramsey Road, Shirley, NY 11967, USA

<b>Synonyms</b>	C11orf1
<b>Gene ID</b>	64776
<b>mRNA Refseq</b>	NM_022761.2
<b>Protein Refseq</b>	NP_073598.1
<b>UniProt ID</b>	Q9H5F2



Tel: 1-631-559-9269 1-516-512-3133

Email: [info@creative-biomart.com](mailto:info@creative-biomart.com) Fax: 1-631-938-8127

45-1 Ramsey Road, Shirley, NY 11967, USA