

Recombinant Human C11orf10 Protein, GST-tagged

Cat. No. C11orf10-457H **Lot. No.** (See product label)

SPECIFICATION

Product Overview	Human C11orf10 full-length ORF (NP_055021.1, 1 a.a. - 79 a.a.) recombinant protein with GST tag at N-terminal.
Species	Human
Source	Wheat Germ
Form	50 mM Tris-HCl, 10 mM reduced Glutathione, pH=8.0 in the elution buffer.
Molecular Mass	35.09 kDa
AA Sequence	MELEAMSRYTSPVNPVAVFPHLTVVLLAIGMFFTAWFFVYEVTSTKYTRDIYKELLISLV ASLFMGFGVLFLLLWVGIYV
Storage	Store at -80 centigrade. Aliquot to avoid repeated freezing and thawing.
Storage Buffer	50 mM Tris-HCl, 10 mM reduced Glutathione, pH=8.0 in the elution buffer.

GENE INFORMATION

Gene Name	C11orf10 chromosome 11 open reading frame 10 [Homo sapiens]
Official Symbol	C11orf10
Synonyms	C11orf10

 Tel: 1-631-559-9269 1-516-512-3133

 Email: info@creative-biomart.com  Fax: 1-631-938-8127

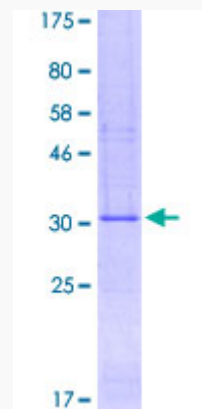
 45-1 Ramsey Road, Shirley, NY 11967, USA

Gene ID 746

mRNA Refseq NM_014206.3

Protein Refseq NP_055021.1

UniProt ID P61165



Tel: 1-631-559-9269 1-516-512-3133

Email: info@creative-biomart.com Fax: 1-631-938-8127

45-1 Ramsey Road, Shirley, NY 11967, USA