

## Recombinant Human C11orf16 Protein, GST-tagged

**Cat. No.** C11orf16-460H **Lot. No.** (See product label)

### SPECIFICATION

<b>Product Overview</b>	Human C11orf16 full-length ORF (AAH27865.1, 1 a.a. - 404 a.a.) recombinant protein with GST tag at N-terminal.
<b>Species</b>	Human
<b>Source</b>	Wheat Germ
<b>Form</b>	50 mM Tris-HCl, 10 mM reduced Glutathione, pH=8.0 in the elution buffer.
<b>Molecular Mass</b>	70.8 kDa
<b>AA Sequence</b>	MESSTGPRMPLLKYCSVATSLKAPGWDGAAPPWDLSTFTYPFALQAPWLTGHKPLA RHASSCPCLHVADPAWQQPGWLGRAGDAANTWVLARREADGFYYRAQIKATPELE RQGVLLVEFEAPLVAGPKLPAQQQRVVLEEDVIPLSPSVGYSLRPGDKVLALWEPG QQQYGP GTVLLGLEMRDPQRASKEKEITVHFWNGKAAKVPLGGVQSVSLTIWKKAV ERLHKSFTREHPRPLHWAPCCSLLGPITGRITNELPPDAPFLCPLCHHHACCQLLCQ GCLCGCPPCGTTWWPLTRTSEVMARELPELEATAQLLPLEGPKEEKVAMHAPLAVS SSSSSSCEQDGVENDLEMGPPQRLMVNSAVNTDPIFLEMPLRQSGLCQPEWRYW KRNNGPEPCPGKPGKE
<b>Storage</b>	Store at -80 centigrade. Aliquot to avoid repeated freezing and thawing.
<b>Storage Buffer</b>	50 mM Tris-HCl, 10 mM reduced Glutathione, pH=8.0 in the elution buffer.

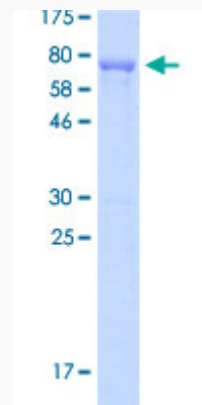
### GENE INFORMATION

 Tel: 1-631-559-9269 1-516-512-3133

 Email: [info@creative-biomart.com](mailto:info@creative-biomart.com)  Fax: 1-631-938-8127

 45-1 Ramsey Road, Shirley, NY 11967, USA

<b>Gene Name</b>	C11orf16 chromosome 11 open reading frame 16 [ Homo sapiens ]
<b>Official Symbol</b>	C11orf16
<b>Synonyms</b>	C11ORF16; chromosome 11 open reading frame 16; uncharacterized protein C11orf16;
<b>Gene ID</b>	56673
<b>mRNA Refseq</b>	NM_020643
<b>Protein Refseq</b>	NP_065694
<b>UniProt ID</b>	Q9NQ32



Tel: 1-631-559-9269 1-516-512-3133

Email: [info@creative-biomart.com](mailto:info@creative-biomart.com) Fax: 1-631-938-8127

45-1 Ramsey Road, Shirley, NY 11967, USA