

Recombinant Human C11orf30 Protein, GST-tagged

Cat. No. C11orf30-465H **Lot. No.** (See product label)

SPECIFICATION

Product Overview	Human C11orf30 partial ORF (NP_064578, 1081 a.a. - 1178 a.a.) recombinant protein with GST-tag at N-terminal.
Species	Human
Source	Wheat Germ
Form	50 mM Tris-HCl, 10 mM reduced Glutathione, pH=8.0 in the elution buffer.
Molecular Mass	36.52 kDa
AA Sequence	PASSEKQTASQVEQPIITQGSSVTKITFEGRQPPTVTKITGGSSVPKLTSPVTSISPIQ ASEKTAVSDILKMSLMEAQIDTNVEHMIVDPPKKALATS
Storage	Store at -80 centigrade. Aliquot to avoid repeated freezing and thawing.
Storage Buffer	50 mM Tris-HCl, 10 mM reduced Glutathione, pH=8.0 in the elution buffer.

GENE INFORMATION

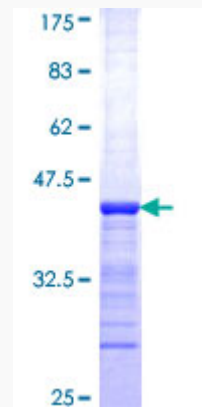
Gene Name	C11orf30 chromosome 11 open reading frame 30 [Homo sapiens]
Official Symbol	C11orf30
Synonyms	C11ORF30; chromosome 11 open reading frame 30; protein EMSY; EMSY; GL002;

 Tel: 1-631-559-9269 1-516-512-3133

 Email: info@creative-biomart.com  Fax: 1-631-938-8127

 45-1 Ramsey Road, Shirley, NY 11967, USA

FLJ90741;

Gene ID 56946**mRNA Refseq** NM_020193**Protein Refseq** NP_064578**MIM** 608574**UniProt ID** Q7Z589 Tel: 1-631-559-9269 1-516-512-3133 Email: info@creative-biomart.com  Fax: 1-631-938-8127 45-1 Ramsey Road, Shirley, NY 11967, USA