

# Recombinant Human C11orf42 Protein, MYC/DDK-tagged, C13 and N15-labeled

**Cat. No.** C11orf42-149H    **Lot. No.** (See product label)

## SPECIFICATION

<b>Product Overview</b>	C11orf42 MS Standard C13 and N15-labeled recombinant protein (NP_775796) with a C-terminal MYC/DDK tag, was expressed in HEK293 cells.
<b>Species</b>	Human
<b>Source</b>	HEK293
<b>Description</b>	C11orf42 (Chromosome 11 Open Reading Frame 42) is a Protein Coding gene.
<b>Molecular Mass</b>	36.4 kDa
<b>AA Sequence</b>	MLVGTPNLLTLDEADATWTLIKDKVIEEHFGPNAVAVPFLSDAACYDLLGVLVKQSRP AHTRLALPGRQGRRALKPVGPLPSLLEQAGSEGAFHCTREYSPNGRAERAYEETR MLDGQPCKIRLHMGLDRKKVAFLLLPQGQVSLQQTLPWLRSTHSIYVIYQVFSCSWL QLGLTSTAREPQLLRLLRSLPVAFSLKFLSKGVLGPQKPLTKDPLPHGANWVRP NLSIMPPLAPTSASADTTEAADVPPPVPAPPTPPPQEGPEDKPTRFSYKGRNPFWR GPQILSENWLFSPRSPPPGAQGGGPRDPDGHSMSLPLLQGLSSEFDSDDTRTRPL EQKLISEEDLAANDILDYKDDDDKV
<b>Purity</b>	> 80% as determined by SDS-PAGE and Coomassie blue staining
<b>Stability</b>	Stable for 3 months from receipt of products under proper storage and handling conditions.

 Tel: 1-631-559-9269    1-516-512-3133

 Email: [info@creative-biomart.com](mailto:info@creative-biomart.com)     Fax: 1-631-938-8127

 45-1 Ramsey Road, Shirley, NY 11967, USA

<b>Storage</b>	Store at -80 centigrade. Avoid repeated freeze-thaw cycles.
----------------	---

<b>Concentration</b>	50 µg/mL as determined by BCA
----------------------	-------------------------------

<b>Storage Buffer</b>	100 mM glycine, 25 mM Tris-HCl, pH 7.3.
-----------------------	---

## GENE INFORMATION

<b>Gene Name</b>	C11orf42 chromosome 11 open reading frame 42 [ Homo sapiens (human) ]
------------------	---

<b>Official Symbol</b>	C11orf42
------------------------	----------

<b>Synonyms</b>	C11orf42; chromosome 11 open reading frame 42; MGC34805; uncharacterized protein C11orf42
-----------------	---

<b>Gene ID</b>	160298
----------------	--------

<b>mRNA Refseq</b>	NM_173525
--------------------	-----------

<b>Protein Refseq</b>	NP_775796
-----------------------	-----------

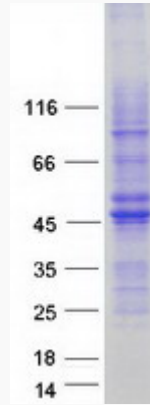
<b>UniProt ID</b>	Q8N5U0
-------------------	--------

 Tel: 1-631-559-9269 1-516-512-3133

 Email: [info@creative-biomart.com](mailto:info@creative-biomart.com)  Fax: 1-631-938-8127

 45-1 Ramsey Road, Shirley, NY 11967, USA

**SDS-PAGE**



 Tel: 1-631-559-9269 1-516-512-3133

 Email: [info@creative-biomart.com](mailto:info@creative-biomart.com)  Fax: 1-631-938-8127

 45-1 Ramsey Road, Shirley, NY 11967, USA