

# Recombinant Human C11orf58 Protein, Myc/DDK-tagged, C13 and N15-labeled

**Cat. No.** C11orf58-2877H    **Lot. No.** (See product label)

## SPECIFICATION

<b>Product Overview</b>	C11orf58 MS Standard C13 and N15-labeled recombinant protein (NP_055082) with a C-terminal MYC/DDK tag, was expressed in HEK293 cells.
<b>Species</b>	Human
<b>Source</b>	HEK293
<b>Description</b>	C11orf58 (Chromosome 11 Open Reading Frame 58) is a Protein Coding gene. Diseases associated with C11orf58 include Ataxia, Sensory, 1, Autosomal Dominant and Achalasia-Addisonianism-Alacrima Syndrome.
<b>Molecular Mass</b>	20.3 kDa
<b>AA Sequence</b>	MSAARESHPHGVKRSASPDDDLGSSNWEAADLGNEERKQKFLRLMGAGKKEHTG RLVIGDHKSTSHFRTGEEDKKINEELESQYQQSMDSKLSGRYRRHCGLGFSEVEDH DGEADVAGDDDDDDDDSPDPESPDDSESDSESEKEESAELQAAEHPDEVEDPKN KKDAKSNYKMMFVKSSGSTRTRPLEQKLISEEDLAANDILDYKDDDDKV
<b>Purity</b>	> 80% as determined by SDS-PAGE and Coomassie blue staining
<b>Stability</b>	Stable for 3 months from receipt of products under proper storage and handling conditions.
<b>Storage</b>	Store at -80 centigrade. Avoid repeated freeze-thaw cycles.

 Tel: 1-631-559-9269    1-516-512-3133

 Email: [info@creative-biomart.com](mailto:info@creative-biomart.com)     Fax: 1-631-938-8127

 45-1 Ramsey Road, Shirley, NY 11967, USA

**Concentration** 50 µg/mL as determined by BCA

**Storage Buffer** 100 mM glycine, 25 mM Tris-HCl, pH 7.3.

## GENE INFORMATION

**Gene Name** C11orf58 chromosome 11 open reading frame 58 [ Homo sapiens (human) ]

**Official Symbol** C11orf58

**Synonyms** C11ORF58; chromosome 11 open reading frame 58; small acidic protein; SMAP; IMAGE145052; MGC117265; DKFZp686N0232;

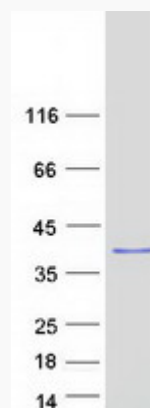
**Gene ID** 10944

**mRNA Refseq** NM\_014267

**Protein Refseq** NP\_055082

**UniProt ID** O00193

## SDS-PAGE



 Tel: 1-631-559-9269 1-516-512-3133

 Email: [info@creative-biomart.com](mailto:info@creative-biomart.com)  Fax: 1-631-938-8127

 45-1 Ramsey Road, Shirley, NY 11967, USA