

Recombinant Human C11orf87 Protein, GST-tagged

Cat. No. C11orf87-491H **Lot. No.** (See product label)

SPECIFICATION

Product Overview	Human C11orf87 full-length ORF (NP_997528.1, 1 a.a. - 197 a.a.) recombinant protein with GST-tag at N-terminal.
Species	Human
Source	Wheat Germ
Form	50 mM Tris-HCl, 10 mM reduced Glutathione, pH=8.0 in the elution buffer.
Molecular Mass	47 kDa
AA Sequence	MSARAPKELRLALPPCLLNRTFASPNASGSGNTGARGPGAVGSGTCITQVGQQLFQ SFSSTLVLVIVLVTIVIFCLIVLSLSTFHIHKRRMKRKMQRQAQEEYERDHCSGSRGGGG LPRPGRQAPTHAKETRLERQPRDSPFCAPSNASSLSSSSPGLPCQGPCAPPPPPPA SSPQGAHAASSCLDTAGEGLLQTVVLS
Storage	Store at -80 centigrade. Aliquot to avoid repeated freezing and thawing.
Storage Buffer	50 mM Tris-HCl, 10 mM reduced Glutathione, pH=8.0 in the elution buffer.

GENE INFORMATION

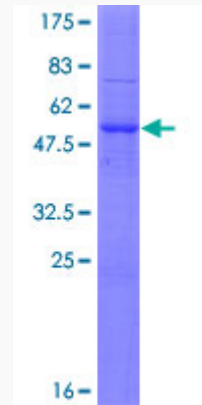
Gene Name	C11orf87 chromosome 11 open reading frame 87 [Homo sapiens]
Official Symbol	C11orf87

 Tel: 1-631-559-9269 1-516-512-3133

 Email: info@creative-biomart.com  Fax: 1-631-938-8127

 45-1 Ramsey Road, Shirley, NY 11967, USA

Synonyms	C11ORF87; chromosome 11 open reading frame 87; uncharacterized protein C11orf87; LOC399947; LOH11CR1A; FLJ33767;
Gene ID	399947
mRNA Refseq	NM_207645
Protein Refseq	NP_997528
UniProt ID	Q6NUJ2



 Tel: 1-631-559-9269 1-516-512-3133

 Email: info@creative-biomart.com  Fax: 1-631-938-8127

 45-1 Ramsey Road, Shirley, NY 11967, USA