

Recombinant Human C12ORF49 Protein (34-205 aa), His-SUMO-tagged

Cat. No. C12ORF49-1124H **Lot. No.** (See product label)

SPECIFICATION

Product Overview	Recombinant Human C12ORF49 Protein (34-205 aa) is produced by E. coli expression system. This protein is fused with a 6xHis-SUMO tag at the N-terminal. Research Area: Cell Biology. Protein Description: Full Length of Mature Protein.
Species	Human
Source	E.coli
ProteinLength	34-205 aa
Form	Tris-based buffer, 50% glycerol
Molecular Mass	35.7 kDa
AA Sequence	TFKQEERAVRDRNLLQVHDHNQPIPWKVQFNLGNSSRPSNQCRNSIQGKHLITDEL GYVCERKDLLVNGCCNVNVPSTKQYCCDGCWPNGCCSAYEYCVSCCLQPNKQLL LERFLNRAAVAFQNLFMAVEDHFELCLAKCRTSSQSVQHENTYRDPIAKYCYGESP PELFPA
Purity	> 90% as determined by SDS-PAGE.
Notes	Repeated freezing and thawing is not recommended. Store working aliquots at 4 centigrade for up to one week.

 Tel: 1-631-559-9269 1-516-512-3133

 Email: info@creative-biomart.com  Fax: 1-631-938-8127

 45-1 Ramsey Road, Shirley, NY 11967, USA

Storage

The shelf life is related to many factors, storage state, buffer ingredients, storage temperature and the stability of the protein itself. Generally, the shelf life of liquid form is 6 months at -20 centigrade/-80 centigrade. The shelf life of lyophilized form is 12 months at -20 centigrade/-80 centigrade.

Concentration

A hardcopy of COA with concentration instruction is sent along with the products.

GENE INFORMATION

Gene Name

C12orf49 chromosome 12 open reading frame 49 [Homo sapiens]

Official Symbol

C12ORF49

Synonyms

C12ORF49; UPF0454 protein C12orf49; FLJ21415;

Gene ID

79794

mRNA Refseq

NM_024738

Protein Refseq

NP_079014

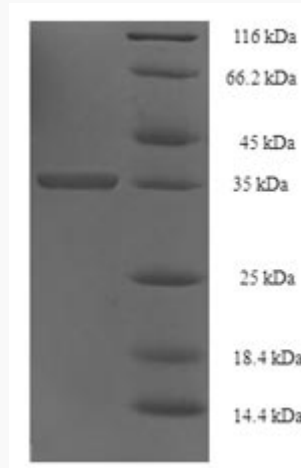
UniProt ID

Q9H741

 Tel: 1-631-559-9269 1-516-512-3133

 Email: info@creative-biomart.com  Fax: 1-631-938-8127

 45-1 Ramsey Road, Shirley, NY 11967, USA



(Tris-Glycine gel) Discontinuous SDS-PAGE (reduced) with 5% enrichment gel and 15% separation gel.

 Tel: 1-631-559-9269 1-516-512-3133

 Email: info@creative-biomart.com  Fax: 1-631-938-8127

 45-1 Ramsey Road, Shirley, NY 11967, USA